

SLC4A2 antibody - N-terminal region

Rabbit Polyclonal Antibody

Catalog # AI12330

Product Information

Application	WB
Primary Accession	P04920
Other Accession	NM_003040 , NP_003031
Reactivity	Human, Mouse, Rat, Rabbit, Pig, Dog, Guinea Pig, Horse, Bovine, Yeast
Predicted	Human, Mouse, Rat, Dog, Guinea Pig, Bovine
Host	Rabbit
Clonality	Polyclonal
Calculated MW	137009

Additional Information

Gene ID	6522
Alias Symbol	AE2, BND3L, EPB3L1, HKB3, NBND3
Other Names	Anion exchange protein 2, AE 2, Anion exchanger 2, Non-erythroid band 3-like protein, BND3L, Solute carrier family 4 member 2, SLC4A2, AE2, EPB3L1, HKB3, MPB3L
Format	Liquid. Purified antibody supplied in 1x PBS buffer with 0.09% (w/v) sodium azide and 2% sucrose.
Reconstitution & Storage	Add 50 ul of distilled water. Final anti-SLC4A2 antibody concentration is 1 mg/ml in PBS buffer with 2% sucrose. For longer periods of storage, store at 20°C. Avoid repeat freeze-thaw cycles.
Precautions	SLC4A2 antibody - N-terminal region is for research use only and not for use in diagnostic or therapeutic procedures.

Protein Information

Name	SLC4A2
Synonyms	AE2, EPB3L1, HKB3, MPB3L
Function	Sodium-independent anion exchanger which mediates the electroneutral exchange of chloride for bicarbonate ions across the cell membrane (PubMed: 15184086 , PubMed: 34668226). Plays an important role in osteoclast differentiation and function (PubMed: 34668226). Regulates bone resorption and calpain-dependent actin cytoskeleton organization in osteoclasts via anion exchange-dependent control of pH (By similarity). Essential for intracellular pH regulation in CD8(+) T- cells upon CD3 stimulation,

modulating CD8(+) T-cell responses (By similarity).

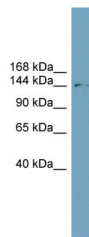
Cellular Location

[Isoform A]: Apical cell membrane; Multi-pass membrane protein. Basolateral cell membrane; Multi-pass membrane protein [Isoform B2]: Apical cell membrane; Multi-pass membrane protein. Basolateral cell membrane; Multi-pass membrane protein

Tissue Location

[Isoform A]: Expressed in the liver, stomach, kidney, prostate, thyroid and rectum. [Isoform B2]: Expressed in the liver and kidney.

Images



WB Suggested Anti-SLC4A2 Antibody Titration: 0.2-1
µg/ml

ELISA Titer: 1:62500

Positive Control: ACHN cell lysate

SLC4A2 is supported by BioGPS gene expression data to
be expressed in ACHN

Please note: All products are 'FOR RESEARCH USE ONLY. NOT FOR USE IN DIAGNOSTIC OR THERAPEUTIC PROCEDURES'.