

SLC25A14 antibody - N-terminal region

Rabbit Polyclonal Antibody

Catalog # AI12336

Product Information

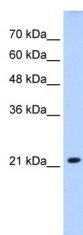
Application	WB
Primary Accession	Q5JY88
Other Accession	NM_003951 , CAI42439
Reactivity	Human, Mouse, Rat, Rabbit, Zebrafish, Pig, Dog, Guinea Pig, Horse, Bovine, Sheep, Yeast
Predicted Host	Human, Mouse, Rat, Rabbit, Zebrafish, Pig, Chicken, Dog, Guinea Pig, Bovine
Clonality	Rabbit
Calculated MW	Polyclonal 21 KDa

Additional Information

Alias Symbol	UCP5, BMCP1
Format	Liquid. Purified antibody supplied in 1x PBS buffer with 0.09% (w/v) sodium azide and 2% sucrose.
Reconstitution & Storage	Add 100 ul of distilled water. Final anti-SLC25A14 antibody concentration is 1 mg/ml in PBS buffer with 2% sucrose. For longer periods of storage, store at 20°C. Avoid repeat freeze-thaw cycles.
Precautions	SLC25A14 antibody - N-terminal region is for research use only and not for use in diagnostic or therapeutic procedures.

Protein Information

Images



WB Suggested Anti-SLC25A14 Antibody Titration:
2.5µg/ml
Positive Control: Jurkat cell lysate
SLC25A14 is supported by BioGPS gene expression data to be expressed in Jurkat