

# SLC9A3 antibody - middle region

Rabbit Polyclonal Antibody

Catalog # AI12337

## Product Information

---

Application	WB
Primary Accession	<a href="#">P48764</a>
Other Accession	<a href="#">NM_004174</a> , <a href="#">NP_004165</a>
Reactivity	Human, Mouse, Rat, Rabbit, Pig, Dog, Bovine, Sheep
Predicted	Human, Mouse, Rat, Dog
Host	Rabbit
Clonality	Polyclonal
Calculated MW	92855

## Additional Information

---

Gene ID	6550
Alias Symbol	MGC126718, MGC126720, NHE3
Other Names	Sodium/hydrogen exchanger 3, Na(+)/H(+) exchanger 3, NHE-3, Solute carrier family 9 member 3, SLC9A3, NHE3
Format	Liquid. Purified antibody supplied in 1x PBS buffer with 0.09% (w/v) sodium azide and 2% sucrose.
Reconstitution & Storage	Add 50 ul of distilled water. Final anti-SLC9A3 antibody concentration is 1 mg/ml in PBS buffer with 2% sucrose. For longer periods of storage, store at 20°C. Avoid repeat freeze-thaw cycles.
Precautions	SLC9A3 antibody - middle region is for research use only and not for use in diagnostic or therapeutic procedures.

## Protein Information

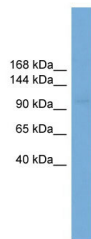
---

Name	SLC9A3 ( <a href="#">HGNC:11073</a> )
Function	Plasma membrane Na(+)/H(+) antiporter (PubMed: <a href="#">18829453</a> , PubMed: <a href="#">26358773</a> , PubMed: <a href="#">35613257</a> ). Exchanges intracellular H(+) ions for extracellular Na(+) in 1:1 stoichiometry, playing a key role in salt and fluid absorption and pH homeostasis (By similarity). Major apical Na(+)/H(+) exchanger in kidney and intestine playing an important role in renal and intestine Na(+) absorption and blood pressure regulation (PubMed: <a href="#">24622516</a> , PubMed: <a href="#">26358773</a> ).
Cellular Location	Apical cell membrane; Multi-pass membrane protein. Cell membrane; Multi-pass membrane protein. Recycling endosome membrane; Multi-pass

membrane protein. Early endosome membrane; Multi-pass membrane protein. Note=In intestinal epithelial cells, localizes to the ileal brush border. Phosphorylation at Ser-663 by SGK1 is associated with increased abundance at the cell membrane Angiotensin-2 enhances apical expression (By similarity) {ECO:0000250|UniProtKB:Q28362}

## Images

---



WB Suggested Anti-SLC9A3 Antibody Titration: 0.2-1  
µg/ml  
ELISA Titer: 1:62500  
Positive Control: COLO205 cell lysate

Please note: All products are 'FOR RESEARCH USE ONLY. NOT FOR USE IN DIAGNOSTIC OR THERAPEUTIC PROCEDURES'.