

SLC6A5 Antibody - N-terminal region

Rabbit Polyclonal Antibody

Catalog # AI12338

Product Information

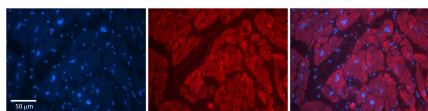
Application	WB
Primary Accession	Q4VAM4
Reactivity	Human, Mouse, Rat, Rabbit, Zebrafish, Pig, Dog, Guinea Pig, Horse, Bovine
Predicted	Human, Mouse, Rat, Rabbit, Zebrafish, Pig, Dog, Guinea Pig, Horse, Bovine
Host	Rabbit
Clonality	Polyclonal
Calculated MW	43 KDa

Additional Information

Format	Liquid. Purified antibody supplied in 1x PBS buffer with 0.09% (w/v) sodium azide and 2% sucrose.
Reconstitution & Storage	Add 50 μ l of distilled water. Final Anti- antibody concentration is 1 mg/ml in PBS buffer with 2% sucrose. For longer periods of storage, store at -20°C. Avoid repeat freeze-thaw cycles.
Precautions	SLC6A5 Antibody - N-terminal region is for research use only and not for use in diagnostic or therapeutic procedures.

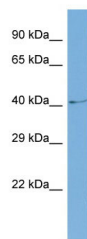
Protein Information

Images

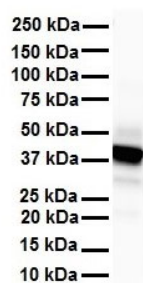


Rabbit Anti-SLC6A5 Antibody
Formalin Fixed Paraffin Embedded Tissue: Human Adult heart Observed Staining: Cytoplasmic
Primary Antibody
Concentration: 1:600
Secondary Antibody: Donkey anti-Rabbit-Cy2/3
Secondary Antibody
Concentration: 1:200
Magnification: 20X
Exposure Time: 0.5 μ s 2.0 sec
Protocol located in Reviews and Data.

Host: Rabbit
Target Name: SLC6A5



Sample Tissue: COLO205 Whole cell lysate
S
Antibody Dilution: 1.0µg/ml



WB Suggested Anti-SLC6A5 antibody Titration: 1 µg/ml
Sample Type: Human heart

Please note: All products are 'FOR RESEARCH USE ONLY. NOT FOR USE IN DIAGNOSTIC OR THERAPEUTIC PROCEDURES'.