

SLC33A1 antibody - middle region

Rabbit Polyclonal Antibody

Catalog # AI12342

Product Information

Application	WB
Primary Accession	O00400
Other Accession	NM_004733 , NP_004724
Reactivity	Human, Mouse, Rat, Rabbit, Zebrafish, Dog, Guinea Pig, Horse, Bovine
Predicted	Mouse, Rabbit, Zebrafish, Chicken, Dog, Horse, Bovine
Host	Rabbit
Clonality	Polyclonal
Calculated MW	60909

Additional Information

Gene ID	9197
Alias Symbol	ACATN, AT-1, AT1, SPG42, CCHLND
Other Names	Acetyl-coenzyme A transporter 1, AT-1, Acetyl-CoA transporter 1, Solute carrier family 33 member 1, SLC33A1, ACATN, AT1
Format	Liquid. Purified antibody supplied in 1x PBS buffer with 0.09% (w/v) sodium azide and 2% sucrose.
Reconstitution & Storage	Add 50 ul of distilled water. Final anti-SLC33A1 antibody concentration is 1 mg/ml in PBS buffer with 2% sucrose. For longer periods of storage, store at 20°C. Avoid repeat freeze-thaw cycles.
Precautions	SLC33A1 antibody - middle region is for research use only and not for use in diagnostic or therapeutic procedures.

Protein Information

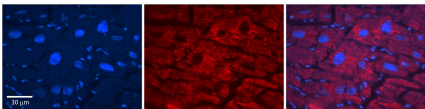
Name	SLC33A1 (HGNC:95)
Synonyms	ACATN, AT1
Function	Acetyl-CoA transporter that mediates active acetyl-CoA import through the endoplasmic reticulum (ER) membrane into the ER lumen where specific ER-based acetyl-CoA:lysine acetyltransferases are responsible for the acetylation of ER-based protein substrates, such as BACE1 (PubMed: 20826464 , PubMed: 24828632). Necessary for O-acetylation of gangliosides (PubMed: 9096318).
Cellular Location	Endoplasmic reticulum membrane; Multi-pass membrane protein

Tissue Location	Ubiquitous. Detected in heart, brain, placenta, lung, liver, skeletal muscle, kidney and pancreas. With strongest signals in pancreas.
-----------------	--

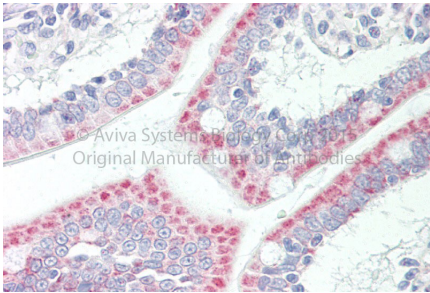
References

Hirabayashi,Y.,(2004)PflugersArch.447(5),760-762ReconstitutionandStorage:Forshorttermuse,storeat2-8Cupto1week.Forlongtermstorage,storeat-20Cinsmallaliquotstopreventfreeze-thawcycles.

Images



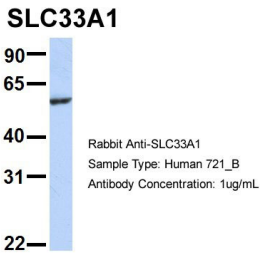
Rabbit Anti-SLC33A1 Antibody
Formalin Fixed Paraffin Embedded Tissue: Human Adult heart
Observed Staining: Cytoplasmic,Membrane
Primary Antibody
Concentration: 1:600
Secondary Antibody: Donkey anti-Rabbit-Cy2/3
Secondary Antibody
Concentration: 1:200
Magnification: 20X
Exposure Time: 0.5 – 2.0 sec
Protocol located in Reviews and Data.



Rabbit Anti-SLC33A1 antibody
Formalin Fixed Paraffin Embedded Tissue: Human Adult Small intestine
Observed Staining: Cytoplasm in hepatocytes
Primary Antibody
Concentration: 1:600
Secondary Antibody: Donkey anti-Rabbit-Cy3
Secondary Antibody
Concentration: 1:200
Magnification: 20X
Exposure Time: 0.5 – 2.0 sec



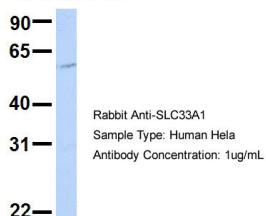
WB Suggested Anti-SLC33A1 Antibody Titration: 0.2-1 µg/ml
ELISA Titer: 1:62500
Positive Control: Human Placenta



Host: Rabbit
Target Name: WT1
Sample Tissue: 721_B
Antibody Dilution: 1.0µg/mL
SLC33A1 is supported by BioGPS gene expression data to be expressed in 721_B

Host: Rabbit

SLC33A1

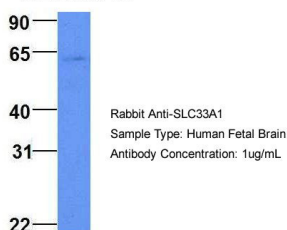


Target Name: EGFL8

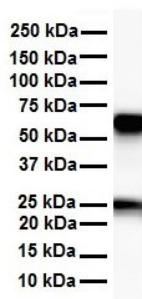
Sample Tissue: Hela

Antibody Dilution: 1.0µg/ml SLC33A1 is strongly supported by BioGPS gene expression data to be expressed in Human HeLa cells

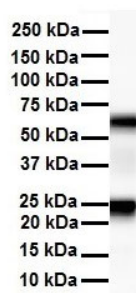
SLC33A1



Host: Rabbit Target Name: NOP56 Sample Tissue: Human Fetal Brain Antibody Dilution: 1.0ug/ml



WB Suggested Anti-SLC33A1 antibody Titration: 1 µg/ml
Sample Type: Human heart



WB Suggested Anti-SLC33A1 antibody Titration: 1 ug/mL
Sample Type: Human liver

Please note: All products are 'FOR RESEARCH USE ONLY. NOT FOR USE IN DIAGNOSTIC OR THERAPEUTIC PROCEDURES'.