

# SLC35B1 antibody - C-terminal region

Rabbit Polyclonal Antibody

Catalog # AI12348

## Product Information

Application	WB
Primary Accession	<a href="#">P78383</a>
Other Accession	<a href="#">NM_005827</a> , <a href="#">NP_005818</a>
Reactivity	Human, Mouse, Rat, Rabbit, Zebrafish, Pig, Dog, Guinea Pig, Horse, Bovine
Predicted	Human, Pig, Chicken, Dog, Guinea Pig, Horse, Bovine
Host	Rabbit
Clonality	Polyclonal
Calculated MW	35760

## Additional Information

Gene ID	10237
Alias Symbol	UGTREL1
Other Names	Solute carrier family 35 member B1, UDP-galactose transporter-related protein 1, UGTrel1, hUGTrel1, SLC35B1, UGTREL1
Format	Liquid. Purified antibody supplied in 1x PBS buffer with 0.09% (w/v) sodium azide and 2% sucrose.
Reconstitution & Storage	Add 100 ul of distilled water. Final anti-SLC35B1 antibody concentration is 1 mg/ml in PBS buffer with 2% sucrose. For longer periods of storage, store at 20°C. Avoid repeat freeze-thaw cycles.
Precautions	SLC35B1 antibody - C-terminal region is for research use only and not for use in diagnostic or therapeutic procedures.

## Protein Information

Name	SLC35B1 {ECO:0000303   PubMed:35041824, ECO:0000312   HGNC:HGNC:20798}
Function	ATP:ADP antiporter that catalyzes the exchange of ATP and ADP across the endoplasmic reticulum (ER) membrane. Imports ATP from the cytosol to the ER lumen and exports ADP in the opposite direction (PubMed: <a href="#">30154480</a> , PubMed: <a href="#">35041824</a> ). Regulates ER energy metabolism and protein biogenesis. Appears to be part of a calcium-dependent ER to cytosol low energy response axis, where calcium efflux from ER to the cytosol triggers ATP import into the ER lumen to maintain sufficient ATP supply. Provides ATP to ER chaperone HSPA5 that drives protein folding and trafficking in the ER (PubMed: <a href="#">30154480</a> , PubMed: <a href="#">35041824</a> ). Can transport dATP, UTP or UDP in exchange for ATP, but

the physiological relevance of this process remains to be established (PubMed:[30154480](#), PubMed:[35041824](#)).

## Cellular Location

Endoplasmic reticulum membrane; Multi-pass membrane protein

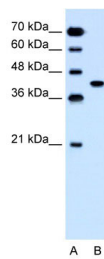
## References

---

Ishida,N.,(1996)J.Biochem.120(6),1074-1078ReconstitutionandStorage:Forshorttermuse,storeat2-8Cupto1week.Forlongtermstorage,storeat-20Cin small aliquotstopreventfreeze-thawcycles.

## Images

---



WB Suggested Anti-SLC35B1 Antibody Titration:  
1.25µg/ml  
Positive Control: Jurkat cell lysate

Please note: All products are 'FOR RESEARCH USE ONLY. NOT FOR USE IN DIAGNOSTIC OR THERAPEUTIC PROCEDURES'.