

SLC35A3 antibody - middle region

Rabbit Polyclonal Antibody

Catalog # AI12350

Product Information

Application	WB
Primary Accession	Q9Y2D2
Other Accession	NM_012243 , NP_036375
Reactivity	Human, Rat, Rabbit, Dog, Horse, Bovine
Predicted	Human, Rabbit, Bovine
Host	Rabbit
Clonality	Polyclonal
Calculated MW	35985

Additional Information

Gene ID	23443
Alias Symbol	DKFZp781P1297
Other Names	UDP-N-acetylglucosamine transporter, Golgi UDP-GlcNAc transporter, Solute carrier family 35 member A3, SLC35A3
Format	Liquid. Purified antibody supplied in 1x PBS buffer with 0.09% (w/v) sodium azide and 2% sucrose.
Reconstitution & Storage	Add 50 ul of distilled water. Final anti-SLC35A3 antibody concentration is 1 mg/ml in PBS buffer with 2% sucrose. For longer periods of storage, store at 20°C. Avoid repeat freeze-thaw cycles.
Precautions	SLC35A3 antibody - middle region is for research use only and not for use in diagnostic or therapeutic procedures.

Protein Information

Name	SLC35A3
Function	Transports diphosphate-N-acetylglucosamine (UDP-GlcNAc) from the cytosol into the lumen of the Golgi apparatus, functioning as an antiporter that exchanges UDP-N-acetyl-alpha-D-glucosamine for UMP (PubMed: 10393322). May supply UDP-GlcNAc as substrate for Golgi- resident glycosyltransferases that generate highly branched, multiantennary complex N-glycans and keratan sulfate (PubMed: 23766508 , PubMed: 34981577). However, the exact role of SLC35A3 still needs to be elucidated, it could be a member of a catalytically more efficient multiprotein complex rather than function independently as a single transporter (PubMed: 32938718).

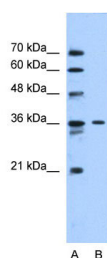
Cellular Location

Golgi apparatus membrane; Multi-pass membrane protein

References

Ghebranious, N., (2006) Am. J. Med. Genet. A 140(12), 1346-1348 Reconstitution and Storage: For short term use, store at 2-8°C up to 1 week. For long term storage, store at -20°C in small aliquots to prevent freeze-thaw cycles.

Images



WB Suggested Anti-SLC35A3 Antibody Titration: 0.2-1
µg/ml
Positive Control: HepG2 cell lysate

Please note: All products are 'FOR RESEARCH USE ONLY. NOT FOR USE IN DIAGNOSTIC OR THERAPEUTIC PROCEDURES'.