

SLC5A4 antibody - N-terminal region

Rabbit Polyclonal Antibody

Catalog # AI12352

Product Information

Application	WB
Primary Accession	Q9NY91
Other Accession	NM_014227 , NP_055042
Reactivity	Human
Predicted	Human
Host	Rabbit
Clonality	Polyclonal
Calculated MW	72456

Additional Information

Gene ID	6527
Alias Symbol	DJ90G24.4, SAAT1, SGLT3
Other Names	Low affinity sodium-glucose cotransporter, Sodium/glucose cotransporter 3, Na(+)/glucose cotransporter 3, Solute carrier family 5 member 4, SLC5A4, SAAT1, SGLT2
Format	Liquid. Purified antibody supplied in 1x PBS buffer with 0.09% (w/v) sodium azide and 2% sucrose.
Reconstitution & Storage	Add 100 ul of distilled water. Final anti-SLC5A4 antibody concentration is 1 mg/ml in PBS buffer with 2% sucrose. For longer periods of storage, store at 20°C. Avoid repeat freeze-thaw cycles.
Precautions	SLC5A4 antibody - N-terminal region is for research use only and not for use in diagnostic or therapeutic procedures.

Protein Information

Name	SLC5A4 {ECO:0000303 PubMed:13130073}
Function	Does not function as sodium/D-glucose symporter (PubMed: 13130073 , PubMed: 20421923 , PubMed: 22766068). However, may function as a D-glucose sensor by generating a D-glucose-induced depolarization which is pH-independent, Na(+)-dependent at neutral pH and probably H(+)-dependent at acidic pH (PubMed: 13130073 , PubMed: 17110502 , PubMed: 20421923 , PubMed: 22766068).
Cellular Location	Cell membrane; Multi-pass membrane protein

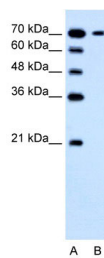
Tissue Location

Expressed in skeletal muscle, where it may localize to the neuromuscular junction (at protein level) (PubMed:13130073) Expressed in small intestine where it may localize to cholinergic neurons of the submucosal plexus and myenteric plexus (at protein level) (PubMed:13130073). Detected in kidney (at protein level) (PubMed:22766068).

References

Li, M.S., (2003) Proc. Natl. Acad. Sci. U.S.A. 100(20), 11753-11758 Reconstitution and Storage: For short term use, store at 2-8°C up to 1 week. For long term storage, store at -20°C in small aliquots to prevent freeze-thaw cycles.

Images



WB Suggested Anti-SLC5A4 Antibody Titration: 1.25 µg/ml
Positive Control: Jurkat cell lysate

Please note: All products are 'FOR RESEARCH USE ONLY. NOT FOR USE IN DIAGNOSTIC OR THERAPEUTIC PROCEDURES'.