

# SLC2A8 antibody - middle region

Rabbit Polyclonal Antibody

Catalog # AI12355

## Product Information

Application	WB
Primary Accession	<a href="#">Q9NY64</a>
Other Accession	<a href="#">NM_014580</a> , <a href="#">NP_055395</a>
Reactivity	Human, Rabbit
Predicted	Human, Rabbit
Host	Rabbit
Clonality	Polyclonal
Calculated MW	50819

## Additional Information

Gene ID	29988
Alias Symbol	GLUT8, GLUTX1
Other Names	Solute carrier family 2, facilitated glucose transporter member 8, Glucose transporter type 8, GLUT-8, Glucose transporter type X1, SLC2A8, GLUT8, GLUTX1
Format	Liquid. Purified antibody supplied in 1x PBS buffer with 0.09% (w/v) sodium azide and 2% sucrose.
Reconstitution & Storage	Add 50 ul of distilled water. Final anti-SLC2A8 antibody concentration is 1 mg/ml in PBS buffer with 2% sucrose. For longer periods of storage, store at 20°C. Avoid repeat freeze-thaw cycles.
Precautions	SLC2A8 antibody - middle region is for research use only and not for use in diagnostic or therapeutic procedures.

## Protein Information

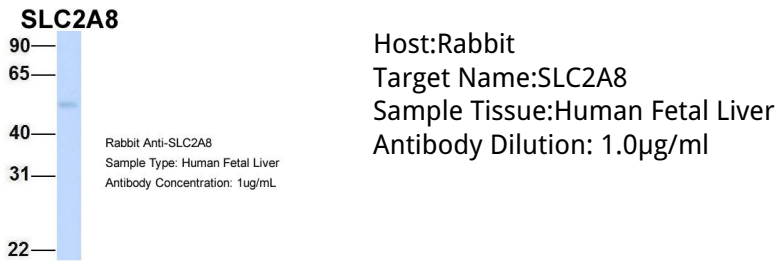
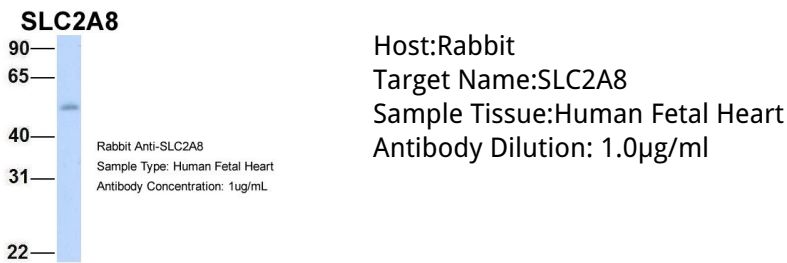
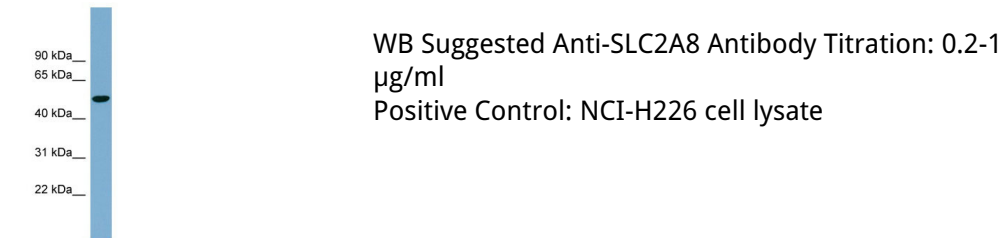
Name	SLC2A8 ( <a href="#">HGNC:13812</a> )
Function	Insulin-regulated facilitative hexose transporter that mediates the transport of glucose and fructose (By similarity). Facilitates hepatic influx of dietary trehalose, which in turn inhibits glucose and fructose influx triggering a starvation signal and hepatic autophagy through activation of AMPK and ULK1 (PubMed: <a href="#">27922102</a> ). Also able to mediate the transport of dehydroascorbate.
Cellular Location	Cell membrane {ECO:0000250 UniProtKB:Q9JJZ1}; Multi-pass membrane protein. Cytoplasmic vesicle membrane {ECO:0000250 UniProtKB:Q9JJZ1}; Multi-pass membrane protein. Note=Principally intracellular. May move

between intracellular vesicles and the plasma membrane. The dileucine internalization motif is critical for intracellular sequestration {ECO:0000250|UniProtKB:Q9JJZ1}

Tissue Location

Highly expressed in testis, but not in testicular carcinoma. Lower amounts present in most other tissues

Images



Please note: All products are 'FOR RESEARCH USE ONLY. NOT FOR USE IN DIAGNOSTIC OR THERAPEUTIC PROCEDURES'.