

SLC2A6 antibody - C-terminal region

Rabbit Polyclonal Antibody

Catalog # AI12358

Product Information

Application	WB, IHC
Primary Accession	Q9UGQ3
Other Accession	NM_017585 , NP_060055
Reactivity	Human
Predicted	Human
Host	Rabbit
Clonality	Polyclonal
Calculated MW	54539

Additional Information

Gene ID	11182
Alias Symbol	GLUT6, GLUT9, HSA011372
Other Names	Solute carrier family 2, facilitated glucose transporter member 6, Glucose transporter type 6, GLUT-6, Glucose transporter type 9, GLUT-9, SLC2A6, GLUT9
Format	Liquid. Purified antibody supplied in 1x PBS buffer with 0.09% (w/v) sodium azide and 2% sucrose.
Reconstitution & Storage	Add 100 ul of distilled water. Final anti-SLC2A6 antibody concentration is 1 mg/ml in PBS buffer with 2% sucrose. For longer periods of storage, store at 20°C. Avoid repeat freeze-thaw cycles.
Precautions	SLC2A6 antibody - C-terminal region is for research use only and not for use in diagnostic or therapeutic procedures.

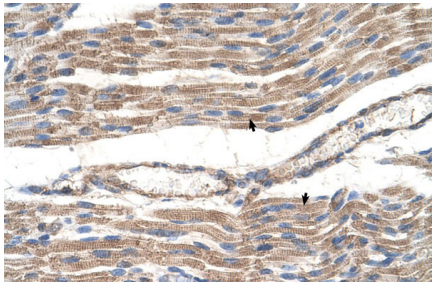
Protein Information

Name	SLC2A6 (HGNC:11011)
Function	Probable sugar transporter that acts as a regulator of glycolysis in macrophages (Probable). Does not transport glucose (PubMed: 30431159).
Cellular Location	Lysosome membrane; Multi-pass membrane protein
Tissue Location	Highly expressed in brain, spleen and peripheral blood leukocytes.

References

Otsuki,T.,(2005)DNARes.12(2),117-126ReconstitutionandStorage:Forshorttermuse,storeat2-8Cupto1week.Forlongtermstorage,storeat-20Cinsmallaliquotstopreventfreeze-thawcycles.

Images



Human Muscle



WB Suggested Anti-SLC2A6 Antibody Titration: 2.5µg/ml
Positive Control: Jurkat cell lysate

Please note: All products are 'FOR RESEARCH USE ONLY. NOT FOR USE IN DIAGNOSTIC OR THERAPEUTIC PROCEDURES'.