

# SLC35C1 antibody - N-terminal region

Rabbit Polyclonal Antibody

Catalog # AI12361

## Product Information

---

<b>Application</b>	WB
<b>Primary Accession</b>	<a href="#">Q96A29</a>
<b>Other Accession</b>	<a href="#">NM_018389</a> , <a href="#">NP_060859</a>
<b>Reactivity</b>	Human, Mouse, Rat, Rabbit, Pig, Dog, Guinea Pig, Horse, Bovine
<b>Predicted</b>	Human, Mouse, Rat, Rabbit, Chicken, Dog, Guinea Pig, Horse, Bovine
<b>Host</b>	Rabbit
<b>Clonality</b>	Polyclonal
<b>Calculated MW</b>	39809

## Additional Information

---

<b>Gene ID</b>	55343
<b>Alias Symbol</b>	FLJ11320, FLJ14841, FUCT1, CDG2C
<b>Other Names</b>	GDP-fucose transporter 1, Solute carrier family 35 member C1, SLC35C1, FUCT1
<b>Format</b>	Liquid. Purified antibody supplied in 1x PBS buffer with 0.09% (w/v) sodium azide and 2% sucrose.
<b>Reconstitution &amp; Storage</b>	Add 100 ul of distilled water. Final anti-SLC35C1 antibody concentration is 1 mg/ml in PBS buffer with 2% sucrose. For longer periods of storage, store at 20°C. Avoid repeat freeze-thaw cycles.
<b>Precautions</b>	SLC35C1 antibody - N-terminal region is for research use only and not for use in diagnostic or therapeutic procedures.

## Protein Information

---

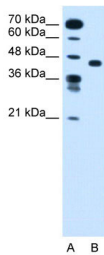
<b>Name</b>	SLC35C1 ( <a href="#">HGNC:20197</a> )
<b>Function</b>	Antiporter specific for GDP-l-fucose and depending on the concomitant reverse transport of GMP. Involved in GDP-fucose import from the cytoplasm into the Golgi lumen.
<b>Cellular Location</b>	Golgi apparatus membrane; Multi-pass membrane protein

## References

---

Hidalgo,A.,(2003)Blood101(5),1705-1712ReconstitutionandStorage:Forshorttermuse,storeat2-8Cupto1week.F  
orlongtermstorage,storeat-20Cinsmallaliquotstopreventfreeze-thawcycles.

Images



WB Suggested Anti-SLC35C1 Antibody Titration:  
1.25µg/ml  
Positive Control: Jurkat cell lysate

Please note: All products are 'FOR RESEARCH USE ONLY. NOT FOR USE IN DIAGNOSTIC OR THERAPEUTIC PROCEDURES'.