

# SLC26A1 antibody - C-terminal region

Rabbit Polyclonal Antibody

Catalog # AI12365

## Product Information

Application	WB, IHC
Primary Accession	<a href="#">Q9H2B4</a>
Other Accession	<a href="#">NM_022042</a> , <a href="#">NP_071325</a>
Reactivity	Human
Predicted	Human
Host	Rabbit
Clonality	Polyclonal
Calculated MW	75016

## Additional Information

Gene ID	10861
Alias Symbol	EDM4, SAT-1, SAT1
Other Names	Sulfate anion transporter 1, SAT-1, Solute carrier family 26 member 1, SLC26A1, SAT1
Format	Liquid. Purified antibody supplied in 1x PBS buffer with 0.09% (w/v) sodium azide and 2% sucrose.
Reconstitution & Storage	Add 50 ul of distilled water. Final anti-SLC26A1 antibody concentration is 1 mg/ml in PBS buffer with 2% sucrose. For longer periods of storage, store at 20°C. Avoid repeat freeze-thaw cycles.
Precautions	SLC26A1 antibody - C-terminal region is for research use only and not for use in diagnostic or therapeutic procedures.

## Protein Information

Name	SLC26A1
Synonyms	SAT1
Function	Sodium-independent sulfate anion transporter (PubMed: <a href="#">12713736</a> , PubMed: <a href="#">27125215</a> ). Can transport other anions including bicarbonate, thiosulfate and oxalate by mediating sulfate- thiosulfate, sulfate-hydrogencarbonate and sulfate-oxalate anion exchange (PubMed: <a href="#">12713736</a> , PubMed: <a href="#">27125215</a> ). Mediates oxalate-hydrogencarbonate anion exchange (By similarity).
Cellular Location	Cell membrane {ECO:0000250 UniProtKB:P58735}; Multi-pass membrane

protein. Basolateral cell membrane {ECO:0000250 | UniProtKB:P45380};  
Multi-pass membrane protein

## Tissue Location

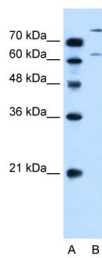
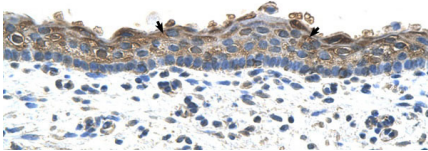
Expressed most abundantly in the kidney and liver, with lower levels in the pancreas, testis, brain, small intestine, colon, and lung.

## References

Regeer, R.R., (2003) *DNACellBiol.* 22(2), 107-117  
Reconstitution and Storage: For short term use, store at 2-8°C up to 1 week. For long term storage, store at -20°C in small aliquots to prevent freeze-thaw cycles.

## Images

Human Skin



WB Suggested Anti-SLC26A1 Antibody Titration: 0.2-1  
 $\mu\text{g/ml}$   
Positive Control: HepG2 cell lysate

Please note: All products are 'FOR RESEARCH USE ONLY. NOT FOR USE IN DIAGNOSTIC OR THERAPEUTIC PROCEDURES'.