

# SLC25A22 antibody - N-terminal region

Rabbit Polyclonal Antibody

Catalog # AI12367

## Product Information

---

Application	WB
Primary Accession	<a href="#">Q9H936</a>
Other Accession	<a href="#">NM_024698</a> , <a href="#">NP_078974</a>
Reactivity	Human, Mouse, Rat, Zebrafish, Pig, Guinea Pig, Bovine
Predicted	Human, Mouse, Rat, Chicken
Host	Rabbit
Clonality	Polyclonal
Calculated MW	34470

## Additional Information

---

Gene ID	79751
Alias Symbol	FLJ13044, GC1, EIEE3, NET44
Other Names	Mitochondrial glutamate carrier 1, GC-1, Glutamate/H(+) symporter 1, Solute carrier family 25 member 22, SLC25A22, GC1
Format	Liquid. Purified antibody supplied in 1x PBS buffer with 0.09% (w/v) sodium azide and 2% sucrose.
Reconstitution & Storage	Add 50 ul of distilled water. Final anti-SLC25A22 antibody concentration is 1 mg/ml in PBS buffer with 2% sucrose. For longer periods of storage, store at 20°C. Avoid repeat freeze-thaw cycles.
Precautions	SLC25A22 antibody - N-terminal region is for research use only and not for use in diagnostic or therapeutic procedures.

## Protein Information

---

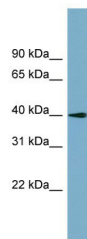
Name	SLC25A22 ( <a href="#">HGNC:19954</a> )
Synonyms	GC1
Function	Mitochondrial glutamate/H(+) symporter. Responsible for the transport of glutamate from the cytosol into the mitochondrial matrix with the concomitant import of a proton (PubMed: <a href="#">11897791</a> ). Plays a role in the control of glucose-stimulated insulin secretion (By similarity).
Cellular Location	Mitochondrion inner membrane {ECO:0000250 UniProtKB:A0A0G2K5L2}; Multi-pass membrane protein

**Tissue Location**

Expressed at high levels in brain, liver, and pancreas.

**Images**

---



WB Suggested Anti-SLC25A22 Antibody Titration: 0.2-1  
 $\mu\text{g/ml}$   
Positive Control: Human kidney

Please note: All products are 'FOR RESEARCH USE ONLY. NOT FOR USE IN DIAGNOSTIC OR THERAPEUTIC PROCEDURES'.