

SLC24A6 antibody - middle region

Rabbit Polyclonal Antibody

Catalog # AI12368

Product Information

Application	WB
Primary Accession	Q6J4K2
Other Accession	NM_024959 , NP_079235
Reactivity	Human, Mouse, Rat, Rabbit, Pig, Dog, Guinea Pig, Horse, Bovine
Predicted	Human, Mouse, Rat, Rabbit, Pig, Chicken, Dog, Guinea Pig, Horse, Bovine
Host	Rabbit
Clonality	Polyclonal
Calculated MW	64231

Additional Information

Gene ID	80024
Alias Symbol	FLJ22233, NCKX6, NCLX, SLC24A6
Other Names	Sodium/potassium/calcium exchanger 6, mitochondrial, Na(+)/K(+)/Ca(2+)-exchange protein 6, Sodium/calcium exchanger protein, mitochondrial, Solute carrier family 24 member 6, Solute carrier family 8 member B1, SLC8B1, NCKX6, NCLX, SLC24A6
Format	Liquid. Purified antibody supplied in 1x PBS buffer with 0.09% (w/v) sodium azide and 2% sucrose.
Reconstitution & Storage	Add 50 ul of distilled water. Final anti-SLC24A6 antibody concentration is 1 mg/ml in PBS buffer with 2% sucrose. For longer periods of storage, store at 20°C. Avoid repeat freeze-thaw cycles.
Precautions	SLC24A6 antibody - middle region is for research use only and not for use in diagnostic or therapeutic procedures.

Protein Information

Name	SLC8B1 (HGNC:26175)
Function	Mitochondrial sodium/calcium antiporter that mediates sodium- dependent calcium efflux from mitochondrion, by mediating the exchange of 3 sodium ions per 1 calcium ion (PubMed: 15060069 , PubMed: 20018762 , PubMed: 22829870 , PubMed: 23056385 , PubMed: 24898248 , PubMed: 28130126 , PubMed: 28219928). Plays a central role in mitochondrial calcium homeostasis by mediating mitochondrial calcium extrusion: calcium efflux is essential for mitochondrial function and cell survival, notably in cardiomyocytes (By similarity). Regulates rates of glucose- dependent insulin

secretion in pancreatic beta-cells during the first phase of insulin secretion: acts by mediating efflux of calcium from mitochondrion, thereby affecting cytoplasmic calcium responses (PubMed:[23056385](#)). Required for store-operated Ca^{2+} entry (SOCE) and Ca^{2+} release-activated Ca^{2+} (CRAC) channel regulation: sodium transport by SLC8B1 leads to promote calcium-shuttling that modulates mitochondrial redox status, thereby regulating SOCE activity (PubMed:[28219928](#)). Involved in B-lymphocyte chemotaxis (By similarity). Able to transport Ca^{2+} in exchange of either Li^{+} or Na^{+} , explaining how Li^{+} catalyzes Ca^{2+} exchange (PubMed:[15060069](#), PubMed:[28130126](#)). In contrast to other members of the family its function is independent of K^{+} (PubMed:[15060069](#)).

Cellular Location

Mitochondrion inner membrane; Multi-pass membrane protein

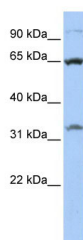
Tissue Location

Present in pancreatic beta-cells (at protein level).

References

Palty,R.,(2004)J.Biol.Chem.279(24),25234-25240ReconstitutionandStorage:Forshorttermuse,storeat2-8Cupto1 week.Forlongtermstorage,storeat-20Cinsmallaliquotstopreventfreeze-thawcycles.

Images



WB Suggested Anti-SLC24A6 Antibody Titration: 0.2-1 $\mu\text{g/ml}$
ELISA Titer: 1:62500
Positive Control: 721_B cell lysate

Please note: All products are 'FOR RESEARCH USE ONLY. NOT FOR USE IN DIAGNOSTIC OR THERAPEUTIC PROCEDURES'.