

SLC2A10 Antibody - C-terminal region

Rabbit Polyclonal Antibody
Catalog # AI12369

Product Information

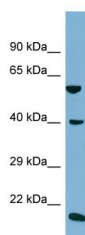
Application	WB
Primary Accession	O95528
Other Accession	NM_030777 , NP_110404
Reactivity	Human
Predicted	Human
Host	Rabbit
Clonality	Polyclonal
Calculated MW	57 KDa

Additional Information

Alias Symbol	ATS, GLUT10
Other Names	Solute carrier family 2, facilitated glucose transporter member 10, Glucose transporter type 10, GLUT-10, SLC2A10, GLUT10
Format	Liquid. Purified antibody supplied in 1x PBS buffer with 0.09% (w/v) sodium azide and 2% sucrose.
Reconstitution & Storage	Add 50 ul of distilled water. Final anti-SLC2A10 antibody concentration is 1 mg/ml in PBS buffer with 2% sucrose. For longer periods of storage, store at 20°C. Avoid repeat freeze-thaw cycles.
Precautions	SLC2A10 Antibody - C-terminal region is for research use only and not for use in diagnostic or therapeutic procedures.

Protein Information

Images



Host: Rabbit
Target Name: SLC2A10
Sample Tissue: NCI-H226 Whole cell lysate
S
Antibody Dilution: 1.0µg/ml

Please note: All products are 'FOR RESEARCH USE ONLY. NOT FOR USE IN DIAGNOSTIC OR THERAPEUTIC PROCEDURES'.