

SLCO5A1 antibody - middle region

Rabbit Polyclonal Antibody

Catalog # AI12370

Product Information

Application	WB
Primary Accession	Q9H2Y9
Other Accession	NM_030958 , NP_112220
Reactivity	Human, Mouse, Rat, Rabbit, Zebrafish, Pig, Dog, Horse, Bovine
Predicted	Human, Mouse, Rat, Chicken, Dog, Horse, Bovine
Host	Rabbit
Clonality	Polyclonal
Calculated MW	91864

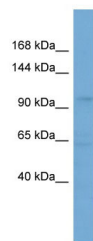
Additional Information

Gene ID	81796
Alias Symbol	FLJ39560, OATP-J, OATP5A1, OATPRP4, SLC21A15, OATP-RP4
Other Names	Solute carrier organic anion transporter family member 5A1, Organic anion transporter polypeptide-related protein 4, OATP-RP4, OATPRP4, Solute carrier family 21 member 15, SLCO5A1, OATP5A1, SLC21A15
Format	Liquid. Purified antibody supplied in 1x PBS buffer with 0.09% (w/v) sodium azide and 2% sucrose.
Reconstitution & Storage	Add 50 ul of distilled water. Final anti-SLCO5A1 antibody concentration is 1 mg/ml in PBS buffer with 2% sucrose. For longer periods of storage, store at 20°C. Avoid repeat freeze-thaw cycles.
Precautions	SLCO5A1 antibody - middle region is for research use only and not for use in diagnostic or therapeutic procedures.

Protein Information

Name	SLCO5A1
Synonyms	OATP5A1, SLC21A15
Cellular Location	Cell membrane; Multi-pass membrane protein.

Images



WB Suggested Anti-SLCO5A1 Antibody Titration: 0.2-1
µg/ml
ELISA Titer: 1:312500
Positive Control: HepG2 cell lysate

Please note: All products are 'FOR RESEARCH USE ONLY. NOT FOR USE IN DIAGNOSTIC OR THERAPEUTIC PROCEDURES'.