

G6pc antibody - N-terminal region

Rabbit Polyclonal Antibody

Catalog # AI12391

Product Information

Application	WB
Primary Accession	P35576
Other Accession	NM_008061 , NP_032087
Reactivity	Human, Mouse, Rat, Rabbit, Pig, Dog, Guinea Pig, Horse, Bovine
Predicted	Human, Mouse, Rat, Pig, Dog, Bovine
Host	Rabbit
Clonality	Polyclonal
Calculated MW	40473

Additional Information

Gene ID	14377
Alias Symbol	AW107337, G6Pase, G6pt, Glc-6-Pase
Other Names	Glucose-6-phosphatase, G-6-Pase, G6Pase, 3.1.3.9, G6pc, G6pt
Format	Liquid. Purified antibody supplied in 1x PBS buffer with 0.09% (w/v) sodium azide and 2% sucrose.
Reconstitution & Storage	Add 50 ul of distilled water. Final anti-G6pc antibody concentration is 1 mg/ml in PBS buffer with 2% sucrose. For longer periods of storage, store at 20°C. Avoid repeat freeze-thaw cycles.
Precautions	G6pc antibody - N-terminal region is for research use only and not for use in diagnostic or therapeutic procedures.

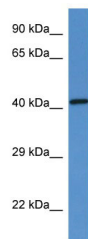
Protein Information

Name	G6pc1
Synonyms	G6pc, G6pt
Function	Hydrolyzes glucose-6-phosphate to glucose in the endoplasmic reticulum. Forms with the glucose-6-phosphate transporter (SLC37A4/G6PT) the complex responsible for glucose production in the terminal step of glycogenolysis and gluconeogenesis. Hence, it is the key enzyme in homeostatic regulation of blood glucose levels.
Cellular Location	Endoplasmic reticulum membrane {ECO:0000250 UniProtKB:P35575}; Multi-pass membrane protein

Tissue Location

Liver and kidney.

Images



WB Suggested Anti-G6pc Antibody Titration: 1.0 µg/ml
Positive Control: Mouse Intestine

Please note: All products are 'FOR RESEARCH USE ONLY. NOT FOR USE IN DIAGNOSTIC OR THERAPEUTIC PROCEDURES'.