

# Sgcd antibody - N-terminal region

Rabbit Polyclonal Antibody

Catalog # AI12397

## Product Information

---

<b>Application</b>	WB
<b>Primary Accession</b>	<a href="#">P82347</a>
<b>Other Accession</b>	<a href="#">NM_011891</a> , <a href="#">NP_036021</a>
<b>Reactivity</b>	Human, Mouse, Rat, Rabbit, Zebrafish, Pig, Dog, Guinea Pig, Horse, Bovine
<b>Predicted</b>	Human, Mouse, Rabbit, Zebrafish, Pig, Chicken, Dog, Bovine
<b>Host</b>	Rabbit
<b>Clonality</b>	Polyclonal
<b>Calculated MW</b>	32133

## Additional Information

---

<b>Gene ID</b>	24052
<b>Alias Symbol</b>	35kDa, delta-SG
<b>Other Names</b>	Delta-sarcoglycan, Delta-SG, 35 kDa dystrophin-associated glycoprotein, 35DAG, Sgcd
<b>Format</b>	Liquid. Purified antibody supplied in 1x PBS buffer with 0.09% (w/v) sodium azide and 2% sucrose.
<b>Reconstitution &amp; Storage</b>	Add 50 ul of distilled water. Final anti-Sgcd antibody concentration is 1 mg/ml in PBS buffer with 2% sucrose. For longer periods of storage, store at 20°C. Avoid repeat freeze-thaw cycles.
<b>Precautions</b>	Sgcd antibody - N-terminal region is for research use only and not for use in diagnostic or therapeutic procedures.

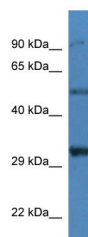
## Protein Information

---

<b>Name</b>	Sgcd
<b>Function</b>	Component of the sarcoglycan complex, a subcomplex of the dystrophin-glycoprotein complex which forms a link between the F-actin cytoskeleton and the extracellular matrix.
<b>Cellular Location</b>	Cell membrane, sarcolemma; Single-pass type II membrane protein. Cytoplasm, cytoskeleton
<b>Tissue Location</b>	Most strongly expressed in skeletal and heart muscle. Also detected in proliferating myoblasts

## Images

---



WB Suggested Anti-Sgcd Antibody Titration: 1.0 µg/ml  
Positive Control: Mouse Kidney

Please note: All products are 'FOR RESEARCH USE ONLY. NOT FOR USE IN DIAGNOSTIC OR THERAPEUTIC PROCEDURES'.