

Lrp8 antibody - middle region

Rabbit Polyclonal Antibody

Catalog # AI12404

Product Information

Application	WB
Primary Accession	Q924X6
Other Accession	NM_053073 , NP_444303
Reactivity	Human, Mouse, Rat, Rabbit, Zebrafish, Pig, Dog, Guinea Pig, Horse, Bovine, Sheep
Predicted Host	Human, Mouse, Rat, Rabbit, Pig, Chicken, Dog, Guinea Pig, Horse, Bovine
Clonality	Rabbit
Calculated MW	Polyclonal 109818

Additional Information

Gene ID	16975
Alias Symbol	4932703M08Rik, AA921429, AI848122, Lr8b, apoER2, ApoER2
Other Names	Low-density lipoprotein receptor-related protein 8, LRP-8, Apolipoprotein E receptor 2, Lrp8, Apoer2
Format	Liquid. Purified antibody supplied in 1x PBS buffer with 0.09% (w/v) sodium azide and 2% sucrose.
Reconstitution & Storage	Add 50 ul of distilled water. Final anti-Lrp8 antibody concentration is 1 mg/ml in PBS buffer with 2% sucrose. For longer periods of storage, store at 20°C. Avoid repeat freeze-thaw cycles.
Precautions	Lrp8 antibody - middle region is for research use only and not for use in diagnostic or therapeutic procedures.

Protein Information

Name	Lrp8
Synonyms	Apoer2
Function	Cell surface receptor for Reelin (RELN) and apolipoprotein E (apoE)-containing ligands (PubMed: 10380922 , PubMed: 11294845 , PubMed: 12899622 , PubMed: 18778775). LRP8 participates in transmitting the extracellular Reelin signal to intracellular signaling processes, by binding to DAB1 on its cytoplasmic tail (PubMed: 10380922). Reelin acts via both the VLDL receptor (VLDLR) and LRP8 to regulate DAB1 tyrosine phosphorylation and microtubule function in neurons (PubMed: 10380922). LRP8 has higher

affinity for Reelin than VLDLR (PubMed:[10380922](#), PubMed:[11294845](#)). LRP8 is thus a key component of the Reelin pathway which governs neuronal layering of the forebrain during embryonic brain development (PubMed:[10380922](#), PubMed:[11294845](#), PubMed:[18778775](#)). Binds the endoplasmic reticulum resident receptor-associated protein (RAP) (PubMed:[12899622](#)). Binds dimers of beta 2- glycoprotein I and may be involved in the suppression of platelet aggregation in the vasculature. Highly expressed in the initial segment of the epididymis, where it affects the functional expression of clusterin and phospholipid hydroperoxide glutathione peroxidase (PHGPx), two proteins required for sperm maturation (PubMed:[12695510](#)). May also function as an endocytic receptor (PubMed:[12169628](#)). Not required for endocytic uptake of SEPP1 in the kidney which is mediated by LRP2 (PubMed:[18174160](#)). Together with its ligand, apolipoprotein E (apoE), may indirectly play a role in the suppression of the innate immune response by controlling the survival of myeloid-derived suppressor cells (PubMed:[29336888](#)).

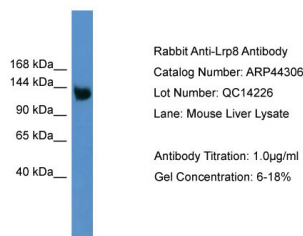
Cellular Location

Cell membrane {ECO:0000250|UniProtKB:Q14114}; Single-pass type I membrane protein. Secreted Note=Isoforms that contain the exon coding for a furin-type cleavage site are proteolytically processed, leading to a secreted receptor fragment.

Tissue Location

Expressed in neurons throughout the brain, with strong expression in pyramidal neurons of the hippocampus, granule cells of the dentate gyrus, cortical neurons and Purkinje cells of the cerebellum. Also expressed in the epithelium of the choroid plexus and of the blood vessels (apical expression), as well as in the epididymis

Images



WB Suggested Anti-Lrp8 Antibody Titration: 0.2-1 µg/ml
ELISA Titer: 1:312500
Positive Control: Mouse Liver

Please note: All products are 'FOR RESEARCH USE ONLY. NOT FOR USE IN DIAGNOSTIC OR THERAPEUTIC PROCEDURES'.