

PRRG2 antibody - middle region

Rabbit Polyclonal Antibody

Catalog # AI12413

Product Information

Application	WB
Primary Accession	O14669
Other Accession	NM_000951 , NP_000942
Reactivity	Human, Mouse, Rat, Pig, Dog, Guinea Pig, Horse, Bovine
Predicted	Human, Mouse, Rat, Horse, Bovine
Host	Rabbit
Clonality	Polyclonal
Calculated MW	22393

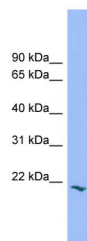
Additional Information

Gene ID	5639
Alias Symbol	PRGP2
Other Names	Transmembrane gamma-carboxyglutamic acid protein 2, Proline-rich gamma-carboxyglutamic acid protein 2, Proline-rich Gla protein 2, PRRG2, PRGP2, TMG2
Format	Liquid. Purified antibody supplied in 1x PBS buffer with 0.09% (w/v) sodium azide and 2% sucrose.
Reconstitution & Storage	Add 50 ul of distilled water. Final anti-PRRG2 antibody concentration is 1 mg/ml in PBS buffer with 2% sucrose. For longer periods of storage, store at 20°C. Avoid repeat freeze-thaw cycles.
Precautions	PRRG2 antibody - middle region is for research use only and not for use in diagnostic or therapeutic procedures.

Protein Information

Name	PRRG2 (HGNC:9470)
Cellular Location	Cell membrane; Single-pass type I membrane protein
Tissue Location	Widely expressed with highest levels in kidney (PubMed:23873930). Also highly expressed in the thyroid (PubMed:23873930, PubMed:9256434).

Images



WB Suggested Anti-PRRG2 Antibody Titration: 0.2-1 μ g/ml
Positive Control: Hela cell lysate

Please note: All products are 'FOR RESEARCH USE ONLY. NOT FOR USE IN DIAGNOSTIC OR THERAPEUTIC PROCEDURES'.