

ATP2B4 antibody - middle region

Rabbit Polyclonal Antibody

Catalog # AI12415

Product Information

Application	WB
Primary Accession	B1APW5
Other Accession	NM_001001396 , NP_001001396
Reactivity	Human, Mouse, Rat, Rabbit, Zebrafish, Dog, Guinea Pig, Horse, Bovine
Predicted	Human, Mouse, Rat, Pig, Chicken, Dog, Guinea Pig, Horse, Bovine
Host	Rabbit
Clonality	Polyclonal
Calculated MW	129 KDa

Additional Information

Alias Symbol	ATP2B2, DKFZp686G08106, DKFZp686M088, MXRA1, PMCA4, PMCA4b, PMCA4x
Format	Liquid. Purified antibody supplied in 1x PBS buffer with 0.09% (w/v) sodium azide and 2% sucrose.
Reconstitution & Storage	Add 50 ul of distilled water. Final anti-ATP2B4 antibody concentration is 1 mg/ml in PBS buffer with 2% sucrose. For longer periods of storage, store at 20°C. Avoid repeat freeze-thaw cycles.
Precautions	ATP2B4 antibody - middle region is for research use only and not for use in diagnostic or therapeutic procedures.

Protein Information

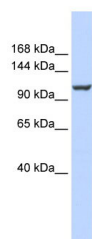
References

Dally, S., (2007) Platelets 18(7), 543-549 Reconstitution and Storage: For short term use, store at 2-8°C up to 1 week. For long term storage, store at -20°C in small aliquots to prevent freeze-thaw cycles.

Images

WB Suggested Anti-ATP2B4 Antibody Titration: 0.2-1 µg/ml
ELISA Titer: 1:1562500
Positive Control: 721_B cell lysate
There is BioGPS gene expression data showing that

ATP2B4 is expressed in 721_B



Please note: All products are 'FOR RESEARCH USE ONLY. NOT FOR USE IN DIAGNOSTIC OR THERAPEUTIC PROCEDURES'.