

# Mctp1 Antibody - N-terminal region

Rabbit Polyclonal Antibody

Catalog # AI12424

## Product Information

---

<b>Application</b>	WB
<b>Primary Accession</b>	<a href="#">Q8CIA5</a>
<b>Other Accession</b>	<a href="#">BAE32513</a>
<b>Reactivity</b>	Human, Mouse, Rat, Rabbit, Zebrafish, Pig, Dog, Guinea Pig, Horse, Bovine, Yeast
<b>Predicted</b>	Human, Mouse, Rat, Rabbit, Zebrafish, Pig, Dog, Guinea Pig, Horse, Bovine, Yeast
<b>Host</b>	Rabbit
<b>Clonality</b>	Polyclonal
<b>Calculated MW</b>	37517

## Additional Information

---

<b>Gene ID</b>	58246
<b>Alias Symbol</b>	2810465F10Rik
<b>Other Names</b>	UDP-xylose and UDP-N-acetylglucosamine transporter, Solute carrier family 35 member B4, Slc35b4
<b>Format</b>	Liquid. Purified antibody supplied in 1x PBS buffer with 0.09% (w/v) sodium azide and 2% sucrose.
<b>Reconstitution &amp; Storage</b>	Add 50 ul of distilled water. Final anti-Mctp1 antibody concentration is 1 mg/ml in PBS buffer with 2% sucrose. For longer periods of storage, store at 20°C. Avoid repeat freeze-thaw cycles.
<b>Precautions</b>	Mctp1 Antibody - N-terminal region is for research use only and not for use in diagnostic or therapeutic procedures.

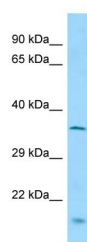
## Protein Information

---

<b>Name</b>	Slc35b4
<b>Function</b>	Antiporter that transports nucleotide sugars across the endoplasmic reticulum (ER) membrane in exchange for another nucleotide sugar. May couple UDP-alpha-D-glucuronate (UDP-GlcA) or UDP-alpha-D-xylose (UDP-Xyl) efflux to UDP-alpha-D-glucuronate (UDP-GlcA) influx into the ER lumen, which in turn stimulates glucuronidation and excretion of endobiotics and xenobiotics.
<b>Cellular Location</b>	Endoplasmic reticulum membrane {ECO:0000250 UniProtKB:Q969S0}; Multi-pass membrane protein

## Images

---



Host: Rabbit  
Target Name: Mctp1  
Sample Tissue: Mouse Lung lysates  
Antibody Dilution: 1.0µg/ml

Please note: All products are 'FOR RESEARCH USE ONLY. NOT FOR USE IN DIAGNOSTIC OR THERAPEUTIC PROCEDURES'.