

C6orf21 antibody - N-terminal region

Rabbit Polyclonal Antibody

Catalog # AI12426

Product Information

Application	WB, IHC
Primary Accession	Q7Z5H2
Other Accession	NM_001003693 , NP_001003693
Reactivity	Human, Dog
Predicted	Human
Host	Rabbit
Clonality	Polyclonal
Calculated MW	31 KDa

Additional Information

Alias Symbol	G6f, LY6G6D, NG32, C6orf21
Format	Liquid. Purified antibody supplied in 1x PBS buffer with 0.09% (w/v) sodium azide and 2% sucrose.
Reconstitution & Storage	Add 100 ul of distilled water. Final anti-C6orf21 antibody concentration is 1 mg/ml in PBS buffer with 2% sucrose. For longer periods of storage, store at 20°C. Avoid repeat freeze-thaw cycles.
Precautions	C6orf21 antibody - N-terminal region is for research use only and not for use in diagnostic or therapeutic procedures.

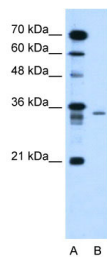
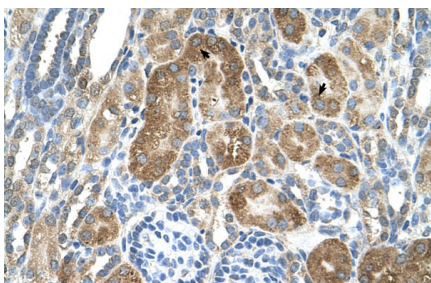
Protein Information

References

DeBiochem.J.375(PT1),207-213(2003)ReconstitutionandStorage:Forshorttermuse,storeat2-8Cupto1week.Forlongtermstorage,storeat-20Cinsmallaliquotstopreventfreeze-thawcycles.

Images

Human kidney



WB Suggested Anti-C6orf21 Antibody Titration: 1.25µg/ml
Positive Control: HepG2 cell lysate

Please note: All products are 'FOR RESEARCH USE ONLY. NOT FOR USE IN DIAGNOSTIC OR THERAPEUTIC PROCEDURES'.