

KLHL31 antibody - C-terminal region

Rabbit Polyclonal Antibody

Catalog # AI12430

Product Information

Application	WB, IHC
Primary Accession	Q9H511
Other Accession	NM_001003760 , NP_001003760
Reactivity	Human, Mouse, Rat, Rabbit, Zebrafish, Pig, Dog, Horse, Bovine
Predicted	Mouse, Rat, Rabbit, Zebrafish, Pig, Chicken, Dog, Horse
Host	Rabbit
Clonality	Polyclonal
Calculated MW	70246

Additional Information

Gene ID	401265
Alias Symbol	BKLHD6, KLHL, bA345L23.2, KBTBD1
Other Names	Kelch-like protein 31, BTB and kelch domain-containing protein 6, Kelch repeat and BTB domain-containing protein 1, Kelch-like protein KLHL, KLHL31, BKLHD6, KBTBD1, KLHL
Format	Liquid. Purified antibody supplied in 1x PBS buffer with 0.09% (w/v) sodium azide and 2% sucrose.
Reconstitution & Storage	Add 50 ul of distilled water. Final anti-KLHL31 antibody concentration is 1 mg/ml in PBS buffer with 2% sucrose. For longer periods of storage, store at 20°C. Avoid repeat freeze-thaw cycles.
Precautions	KLHL31 antibody - C-terminal region is for research use only and not for use in diagnostic or therapeutic procedures.

Protein Information

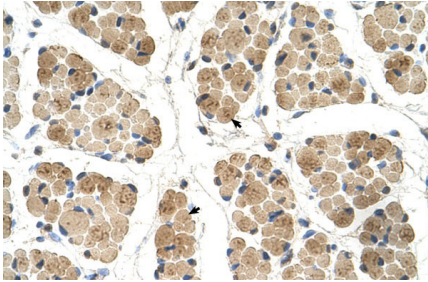
Name	KLHL31
Synonyms	BKLHD6, KBTBD1, KLHL
Function	Transcriptional repressor in MAPK/JNK signaling pathway to regulate cellular functions. Overexpression inhibits the transcriptional activities of both the TPA-response element (TRE) and serum response element (SRE).
Tissue Location	Strongly expressed in skeletal muscle and weakly in heart. According to PubMed:15302408, not expressed in other tissues According to PubMed:18719355, abundantly expressed in both embryonic skeletal and

heart tissues.

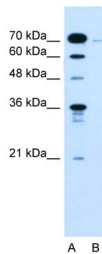
References

Wu, Y.L. (2004) Gene 338(1), 75-83 Reconstitution and Storage: For short term use, store at 2-8°C up to 1 week. For long term storage, store at -20°C in small aliquots to prevent freeze-thaw cycles.

Images



Human Muscle



WB Suggested Anti-KLHL31 Antibody Titration: 0.2-1 $\mu\text{g/ml}$
Positive Control: Jurkat cell lysate

Please note: All products are 'FOR RESEARCH USE ONLY. NOT FOR USE IN DIAGNOSTIC OR THERAPEUTIC PROCEDURES'.