

C14orf180 antibody - N-terminal region

Rabbit Polyclonal Antibody

Catalog # AI12444

Product Information

Application	WB
Primary Accession	Q8N912
Other Accession	NM_001008404 , NP_001008404
Reactivity	Human
Predicted	Human
Host	Rabbit
Clonality	Polyclonal
Calculated MW	18051

Additional Information

Gene ID	400258
Alias Symbol	FLJ38594, C14orf77
Other Names	Nutritionally-regulated adipose and cardiac enriched protein homolog, NRAC, C14orf180, C14orf77
Format	Liquid. Purified antibody supplied in 1x PBS buffer with 0.09% (w/v) sodium azide and 2% sucrose.
Reconstitution & Storage	Add 50 ul of distilled water. Final anti-C14orf180 antibody concentration is 1 mg/ml in PBS buffer with 2% sucrose. For longer periods of storage, store at 20°C. Avoid repeat freeze-thaw cycles.
Precautions	C14orf180 antibody - N-terminal region is for research use only and not for use in diagnostic or therapeutic procedures.

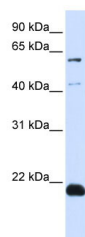
Protein Information

Name	NRAC
Synonyms	C14orf180, C14orf77
Cellular Location	Cell membrane; Single-pass membrane protein

References

Ota,T.,(2004)Nat.Genet.36(1),40-45ReconstitutionandStorage:Forshorttermuse,storeat2-8Cupto1week.Forlongtermstorage,storeat-20Cinsmallaliquotstopreventfreeze-thawcycles.

Images



WB Suggested Anti-C14orf180 Antibody Titration: 0.2-1
µg/ml
ELISA Titer: 1:312500
Positive Control: Transfected 293T

Please note: All products are 'FOR RESEARCH USE ONLY. NOT FOR USE IN DIAGNOSTIC OR THERAPEUTIC PROCEDURES'.