

ARMCX6 antibody - N-terminal region

Rabbit Polyclonal Antibody

Catalog # AI12452

Product Information

Application	WB, IHC
Primary Accession	Q7L4S7
Other Accession	NM_019007 , NP_061880
Reactivity	Human, Mouse, Rat, Pig, Dog, Guinea Pig, Horse
Predicted	Human, Mouse, Rat, Dog
Host	Rabbit
Clonality	Polyclonal
Calculated MW	33019

Additional Information

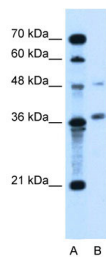
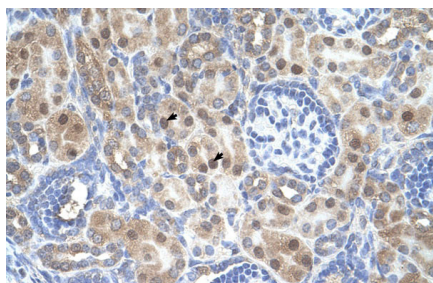
Gene ID	54470
Alias Symbol	FLJ20811
Other Names	Protein ARM CX6, ARM CX6
Format	Liquid. Purified antibody supplied in 1x PBS buffer with 0.09% (w/v) sodium azide and 2% sucrose.
Reconstitution & Storage	Add 100 ul of distilled water. Final anti-ARM CX6 antibody concentration is 1 mg/ml in PBS buffer with 2% sucrose. For longer periods of storage, store at 20°C. Avoid repeat freeze-thaw cycles.
Precautions	ARM CX6 antibody - N-terminal region is for research use only and not for use in diagnostic or therapeutic procedures.

Protein Information

Name	ARM CX6
Function	May regulate the dynamics and distribution of mitochondria in neural cells.
Cellular Location	Mitochondrion {ECO:0000250 UniProtKB:Q8K3A6}. Mitochondrion outer membrane {ECO:0000250 UniProtKB:Q8BHS6}; Single- pass membrane protein

Images

Human kidney



WB Suggested Anti-ARMCX6 Antibody Titration: 5.0µg/ml
Positive Control: Jurkat cell lysate

Please note: All products are 'FOR RESEARCH USE ONLY. NOT FOR USE IN DIAGNOSTIC OR THERAPEUTIC PROCEDURES'.