

PTPLAD2 antibody - middle region

Rabbit Polyclonal Antibody

Catalog # AI12455

Product Information

Application	WB
Primary Accession	Q5VWC8
Other Accession	NM_001010915 , NP_001010915
Reactivity	Human, Mouse, Rat, Rabbit, Pig, Dog, Guinea Pig, Horse, Bovine
Predicted	Mouse, Rat, Chicken, Dog, Guinea Pig
Host	Rabbit
Clonality	Polyclonal
Calculated MW	27520

Additional Information

Gene ID	401494
Alias Symbol Other Names	DKFZp686F01145, DKFZp686G24132, HACD4 Very-long-chain (3R)-3-hydroxyacyl-CoA dehydratase 4, 4.2.1.134, 3-hydroxyacyl-CoA dehydratase 4, HACD4, Protein tyrosine phosphatase-like protein PTPLAD2, Protein-tyrosine phosphatase-like A domain-containing protein 2, PTPLAD2, HACD4
Format	Liquid. Purified antibody supplied in 1x PBS buffer with 0.09% (w/v) sodium azide and 2% sucrose.
Reconstitution & Storage	Add 50 ul of distilled water. Final anti-PTPLAD2 antibody concentration is 1 mg/ml in PBS buffer with 2% sucrose. For longer periods of storage, store at 20°C. Avoid repeat freeze-thaw cycles.
Precautions	PTPLAD2 antibody - middle region is for research use only and not for use in diagnostic or therapeutic procedures.

Protein Information

Name	HACD4 {ECO:0000303 PubMed:18554506, ECO:0000312 HGNC:HGNC:20920}
Function	Catalyzes the third of the four reactions of the long-chain fatty acids elongation cycle. This endoplasmic reticulum-bound enzymatic process, allows the addition of two carbons to the chain of long- and very long-chain fatty acids/VLCFAs per cycle. This enzyme catalyzes the dehydration of the 3-hydroxyacyl-CoA intermediate into trans-2,3-enoyl-CoA, within each cycle of fatty acid elongation. Thereby, it participates in the production of VLCFAs of different chain lengths that are involved in multiple biological processes as

precursors of membrane lipids and lipid mediators.

Cellular Location

Endoplasmic reticulum membrane; Multi-pass membrane protein

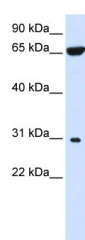
Tissue Location

Highly expressed in leukocytes, and low expression in heart, spleen, kidney, and placenta.

References

Strausberg, R.L., (2002) Proc. Natl. Acad. Sci. U.S.A. 99(26), 16899-16903 Reconstitution and Storage: For short term use, store at 2-8°C up to 1 week. For long term storage, store at -20°C in small aliquots to prevent freeze-thaw cycles.

Images



WB Suggested Anti-PTPLAD2 Antibody Titration: 0.2-1 μ g/ml
ELISA Titer: 1:1562500
Positive Control: 293T cell lysate

Please note: All products are 'FOR RESEARCH USE ONLY. NOT FOR USE IN DIAGNOSTIC OR THERAPEUTIC PROCEDURES'.