

ARSH antibody - middle region

Rabbit Polyclonal Antibody

Catalog # AI12460

Product Information

Application	WB
Primary Accession	Q5FYA8
Other Accession	NM_001011719 , NP_001011719
Reactivity	Human, Rat, Pig, Dog, Guinea Pig, Horse, Bovine
Predicted	Human, Dog, Horse, Bovine
Host	Rabbit
Clonality	Polyclonal
Calculated MW	63525

Additional Information

Gene ID	347527
Alias Symbol	sulfatase
Other Names	Arylsulfatase H, ASH, 3.1.6.-, ARSH
Format	Liquid. Purified antibody supplied in 1x PBS buffer with 0.09% (w/v) sodium azide and 2% sucrose.
Reconstitution & Storage	Add 50 ul of distilled water. Final anti-ARSH antibody concentration is 1 mg/ml in PBS buffer with 2% sucrose. For longer periods of storage, store at 20°C. Avoid repeat freeze-thaw cycles.
Precautions	ARSH antibody - middle region is for research use only and not for use in diagnostic or therapeutic procedures.

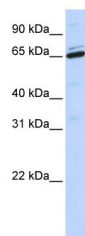
Protein Information

Name	ARSH
Cellular Location	Membrane; Multi-pass membrane protein

References

Sardiello, M., (2005) Hum. Mol. Genet. 14(21), 3203-3217
Reconstitution and Storage: For short term use, store at 2-8°C up to 1 week. For long term storage, store at -20°C in small aliquots to prevent freeze-thaw cycles.

Images



WB Suggested Anti-ARSH Antibody Titration: 0.2-1 $\mu\text{g/ml}$
ELISA Titer: 1:312500
Positive Control: MCF7 cell lysate

Please note: All products are 'FOR RESEARCH USE ONLY. NOT FOR USE IN DIAGNOSTIC OR THERAPEUTIC PROCEDURES'.