

CXorf66 antibody - middle region

Rabbit Polyclonal Antibody

Catalog # AI12467

Product Information

Application	WB
Primary Accession	Q5JRM2
Other Accession	NM_001013403 , NP_001013421
Reactivity	Human
Predicted	Human
Host	Rabbit
Clonality	Polyclonal
Calculated MW	39944

Additional Information

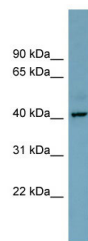
Gene ID	347487
Alias Symbol	LOC347487
Other Names	Uncharacterized protein CXorf66, CXorf66
Format	Liquid. Purified antibody supplied in 1x PBS buffer with 0.09% (w/v) sodium azide and 2% sucrose.
Reconstitution & Storage	Add 50 ul of distilled water. Final anti-CXorf66 antibody concentration is 1 mg/ml in PBS buffer with 2% sucrose. For longer periods of storage, store at 20°C. Avoid repeat freeze-thaw cycles.
Precautions	CXorf66 antibody - middle region is for research use only and not for use in diagnostic or therapeutic procedures.

Protein Information

Name	CXorf66
Cellular Location	Membrane; Single-pass type I membrane protein

Images

WB Suggested Anti-CXorf66 Antibody Titration: 0.2-1
µg/ml
Positive Control: PANC1 cell lysate



Please note: All products are 'FOR RESEARCH USE ONLY. NOT FOR USE IN DIAGNOSTIC OR THERAPEUTIC PROCEDURES'.