

# AADACL4 antibody - middle region

Rabbit Polyclonal Antibody

Catalog # AI12471

## Product Information

---

<b>Application</b>	WB
<b>Primary Accession</b>	<a href="#">Q5VUY2</a>
<b>Other Accession</b>	<a href="#">NM_001013630</a> , <a href="#">NP_001013652</a>
<b>Reactivity</b>	Human, Mouse, Rat, Rabbit, Pig, Dog, Guinea Pig, Horse
<b>Predicted</b>	Human, Mouse, Rat, Rabbit, Pig, Dog, Guinea Pig, Horse
<b>Host</b>	Rabbit
<b>Clonality</b>	Polyclonal
<b>Calculated MW</b>	46082

## Additional Information

---

<b>Gene ID</b>	343066
<b>Other Names</b>	Arylacetamide deacetylase-like 4, 3.1.1.-, AADACL4
<b>Format</b>	Liquid. Purified antibody supplied in 1x PBS buffer with 0.09% (w/v) sodium azide and 2% sucrose.
<b>Reconstitution &amp; Storage</b>	Add 50 ul of distilled water. Final anti-AADACL4 antibody concentration is 1 mg/ml in PBS buffer with 2% sucrose. For longer periods of storage, store at 20°C. Avoid repeat freeze-thaw cycles.
<b>Precautions</b>	AADACL4 antibody - middle region is for research use only and not for use in diagnostic or therapeutic procedures.

## Protein Information

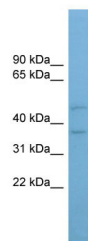
---

<b>Name</b>	AADACL4
<b>Cellular Location</b>	Membrane; Single-pass type II membrane protein

## Images

---

WB Suggested Anti-AADACL4 Antibody Titration: 0.2-1  
µg/ml  
ELISA Titer: 1:62500  
Positive Control: PANC1 cell lysate



Please note: All products are 'FOR RESEARCH USE ONLY. NOT FOR USE IN DIAGNOSTIC OR THERAPEUTIC PROCEDURES'.