

# TM9SF1 antibody - middle region

Rabbit Polyclonal Antibody

Catalog # AI12477

## Product Information

---

<b>Application</b>	WB, IHC
<b>Primary Accession</b>	<a href="#">O15321</a>
<b>Other Accession</b>	<a href="#">NM_006405</a> , <a href="#">NP_006396</a>
<b>Reactivity</b>	Human, Mouse, Rat, Rabbit, Pig, Dog, Guinea Pig, Horse, Bovine
<b>Predicted</b>	Human, Mouse, Rat, Rabbit, Dog, Horse
<b>Host</b>	Rabbit
<b>Clonality</b>	Polyclonal
<b>Calculated MW</b>	68861

## Additional Information

---

<b>Gene ID</b>	10548
<b>Alias Symbol</b>	HMP70, MP70
<b>Other Names</b>	Transmembrane 9 superfamily member 1, MP70 protein family member, hMP70, TM9SF1
<b>Format</b>	Liquid. Purified antibody supplied in 1x PBS buffer with 0.09% (w/v) sodium azide and 2% sucrose.
<b>Reconstitution &amp; Storage</b>	Add 100 ul of distilled water. Final anti-TM9SF1 antibody concentration is 1 mg/ml in PBS buffer with 2% sucrose. For longer periods of storage, store at 20°C. Avoid repeat freeze-thaw cycles.
<b>Precautions</b>	TM9SF1 antibody - middle region is for research use only and not for use in diagnostic or therapeutic procedures.

## Protein Information

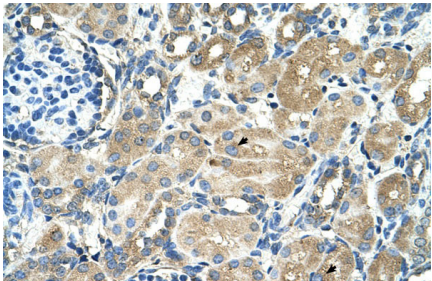
---

<b>Name</b>	TM9SF1
<b>Function</b>	Plays an essential role in autophagy.
<b>Cellular Location</b>	Lysosome membrane; Multi-pass membrane protein. Cytoplasmic vesicle, autophagosome membrane; Multi- pass membrane protein
<b>Tissue Location</b>	Expressed in lung, pancreas, kidney, liver, placenta, skeletal muscle, heart and brain. The amount in skeletal muscle, heart and brain were considerably lower than in the other tissues.

## References

Sugasawa,T.,(2001)Gene273(2),227-237ReconstitutionandStorage:Forshorttermuse,storeat2-8Cupto1week.Fo  
rlongtermstorage,storeat-20Cinsmallaliquotstopreventfreeze-thawcycles.

## Images



Human kidney



WB Suggested Anti-TM9SF1 Antibody Titration: 2.5µg/ml  
Positive Control: Jurkat cell lysate

Please note: All products are 'FOR RESEARCH USE ONLY. NOT FOR USE IN DIAGNOSTIC OR THERAPEUTIC PROCEDURES'.