

RCE1 antibody - N-terminal region

Rabbit Polyclonal Antibody

Catalog # AI12497

Product Information

Application	WB, IHC
Primary Accession	Q9Y256
Other Accession	NM_005133 , NP_005124
Reactivity	Human, Mouse, Rat, Rabbit, Zebrafish, Pig, Goat, Dog, Guinea Pig, Horse, Bovine
Predicted Host	Human, Mouse, Rat, Rabbit, Zebrafish, Pig, Goat, Horse
Clonality	Rabbit
Calculated MW	Polyclonal 35833

Additional Information

Gene ID	9986
Alias Symbol Other Names	FACE2, RCE1A, RCE1B CAAX prenyl protease 2, 3.4.22.-, Farnesylated proteins-converting enzyme 2, FACE-2, Prenyl protein-specific endoprotease 2, RCE1 homolog, hRCE1, RCE1, FACE2, RCE1A, RCE1B
Format	Liquid. Purified antibody supplied in 1x PBS buffer with 0.09% (w/v) sodium azide and 2% sucrose.
Reconstitution & Storage	Add 100 ul of distilled water. Final anti-RCE1 antibody concentration is 1 mg/ml in PBS buffer with 2% sucrose. For longer periods of storage, store at 20°C. Avoid repeat freeze-thaw cycles.
Precautions	RCE1 antibody - N-terminal region is for research use only and not for use in diagnostic or therapeutic procedures.

Protein Information

Name	RCE1
Synonyms	FACE2, RCE1A, RCE1B
Function	Protease involved in the processing of a variety of prenylated proteins containing the C-terminal CAAX motif, where C is a cysteine modified with an isoprenoid lipid, A is an aliphatic amino acid and X is any C-terminal amino acid. Proteolytically removes the C- terminal three residues of farnesylated and geranylated proteins, leaving the prenylated cysteine as the new C-terminus. Is able to process K-Ras, N-Ras, H-Ras, RAP1B and G-gamma-1

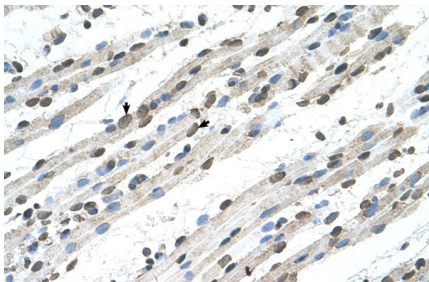
(PubMed:[10085068](#)).

Cellular Location	Endoplasmic reticulum membrane; Multi-pass membrane protein
Tissue Location	Ubiquitous..

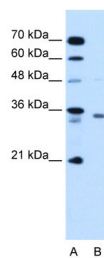
References

Plummer, L.J., (2006) J. Biol. Chem. 281(8), 4596-4605 Reconstitution and Storage: For short term use, store at 2-8°C up to 1 week. For long term storage, store at -20°C in small aliquots to prevent freeze-thaw cycles.

Images



Human Muscle



WB Suggested Anti-RCE1 Antibody Titration: 1.25 µg/ml
Positive Control: HepG2 cell lysate
RCE1 is supported by BioGPS gene expression data to be expressed in HepG2

Please note: All products are 'FOR RESEARCH USE ONLY. NOT FOR USE IN DIAGNOSTIC OR THERAPEUTIC PROCEDURES'.