

RHOT1 antibody - N-terminal region

Rabbit Polyclonal Antibody

Catalog # AI12501

Product Information

Application	WB, IHC
Primary Accession	Q8IXI2
Other Accession	NM_018307 , NP_060777
Reactivity	Human, Mouse, Rat, Rabbit, Zebrafish, Pig, Dog, Guinea Pig, Horse, Bovine
Predicted	Rat, Rabbit, Pig, Chicken, Dog, Guinea Pig, Horse
Host	Rabbit
Clonality	Polyclonal
Calculated MW	70784

Additional Information

Gene ID	55288
Alias Symbol	ARHT1, FLJ11040, FLJ12633, MIRO-1, MIRO1
Other Names	Mitochondrial Rho GTPase 1, MIRO-1, hMiro-1, 3.6.5.-, Rac-GTP-binding protein-like protein, Ras homolog gene family member T1, RHOT1, ARHT1
Format	Liquid. Purified antibody supplied in 1x PBS buffer with 0.09% (w/v) sodium azide and 2% sucrose.
Reconstitution & Storage	Add 50 ul of distilled water. Final anti-RHOT1 antibody concentration is 1 mg/ml in PBS buffer with 2% sucrose. For longer periods of storage, store at 20°C. Avoid repeat freeze-thaw cycles.
Precautions	RHOT1 antibody - N-terminal region is for research use only and not for use in diagnostic or therapeutic procedures.

Protein Information

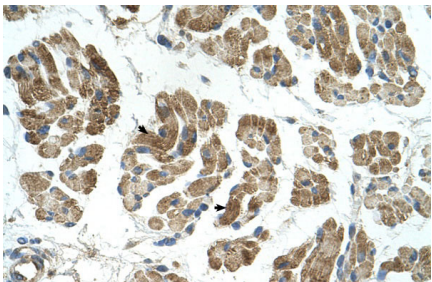
Name	RHOT1
Synonyms	ARHT1
Function	Atypical mitochondrial nucleoside-triphosphatase (NTPase) involved in mitochondrial trafficking (PubMed: 12482879 , PubMed: 16630562 , PubMed: 22396657 , PubMed: 30513825). Probably involved in control of anterograde transport of mitochondria and their subcellular distribution (PubMed: 12482879 , PubMed: 16630562 , PubMed: 22396657). Promotes mitochondrial fission during high calcium conditions (PubMed: 27716788). Can hydrolyze GTP, ATP and UTP (PubMed: 30513825).

Cellular Location	Mitochondrion outer membrane; Single-pass type IV membrane protein. Note=Colocalizes with MGARP and RHOT2 at the mitochondria
Tissue Location	Ubiquitously expressed. Expressed at high level in heart and skeletal muscle.

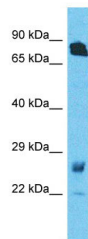
References

Brandenberger,R.,(2004)Nat.Biotechnol.22(6),707-716ReconstitutionandStorage:Forshorttermuse,storeat2-8 Cupto1week.Forlongtermstorage,storeat-20Cinsmallaliquotstopreventfreeze-thawcycles.

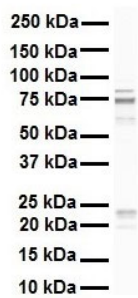
Images



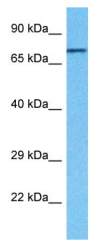
Rabbit Anti-RHOT1 Antibody
Paraffin Embedded Tissue: Human Muscle
Cellular Data: Skeletal muscle cells
Antibody Concentration: 4.0-8.0 µg/ml
Magnification: 400X



Host: Rabbit
Target Name: RHOT1
Sample Tissue: Fetal Lung lysates
Antibody Dilution: 1.0µg/ml



WB Suggested Anti-RHOT1 antibody Titration: 1 µg/ml
Sample Type: Human A549



Host: Rabbit
Target Name: MIRO1
Sample Tissue: Fetal Lung Lysate
Antibody Dilution: 1.0µg/ml

Host: Rabbit
Target Name: MIRO1
Sample Tissue: Fetal Lung lysates
Antibody Dilution: 1.0µg/ml

Please note: All products are 'FOR RESEARCH USE ONLY. NOT FOR USE IN DIAGNOSTIC OR THERAPEUTIC PROCEDURES'.