

SI antibody - middle region

Rabbit Polyclonal Antibody

Catalog # AI12503

Product Information

Application	WB
Primary Accession	P14410
Other Accession	NM_001041 , NP_001032
Reactivity	Human, Mouse, Rat, Rabbit, Zebrafish, Pig, Dog, Guinea Pig, Horse, Bovine
Predicted	Mouse, Rat, Dog, Horse, Bovine
Host	Rabbit
Clonality	Polyclonal
Calculated MW	209453

Additional Information

Gene ID	6476
Alias Symbol	MGC131621, MGC131622
Other Names	Sucrase-isomaltase, intestinal, Sucrase, 3.2.1.48, Isomaltase, 3.2.1.10, SI
Format	Liquid. Purified antibody supplied in 1x PBS buffer with 0.09% (w/v) sodium azide and 2% sucrose.
Reconstitution & Storage	Add 50 ul of distilled water. Final anti-SI antibody concentration is 1 mg/ml in PBS buffer with 2% sucrose. For longer periods of storage, store at 20°C. Avoid repeat freeze-thaw cycles.
Precautions	SI antibody - middle region is for research use only and not for use in diagnostic or therapeutic procedures.

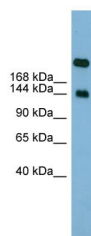
Protein Information

Name	SI
Function	Plays an important role in the final stage of carbohydrate digestion. Isomaltase activity is specific for both alpha-1,4- and alpha-1,6-oligosaccharides.
Cellular Location	Apical cell membrane; Single-pass type II membrane protein. Note=Brush border
Tissue Location	Expressed in the poorly differentiated crypt cells of the small intestine as well as in the mature villous cells Expressed at very low levels in the colon

References

Gu, N., (2007) Biochem. Biophys. Res. Commun. 353(3), 617-622 Reconstitution and Storage: For short term use, store at 2-8°C up to 1 week. For long term storage, store at -20°C in small aliquots to prevent freeze-thaw cycles.

Images



WB Suggested Anti-SI Antibody Titration: 0.2-1 µg/ml
ELISA Titer: 1:312500
Positive Control: Human Small Intestine

Please note: All products are 'FOR RESEARCH USE ONLY. NOT FOR USE IN DIAGNOSTIC OR THERAPEUTIC PROCEDURES'.