

NRCAM antibody - N-terminal region

Rabbit Polyclonal Antibody
Catalog # AI12504

Product Information

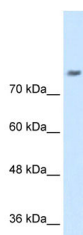
Application	WB
Primary Accession	Q4KMQ7
Other Accession	NM_001037132 , AAH98401
Reactivity	Human, Mouse, Rat, Rabbit, Zebrafish, Pig, Dog, Guinea Pig, Horse, Bovine
Predicted	Human, Mouse, Rat, Rabbit, Zebrafish, Pig, Chicken, Dog, Guinea Pig, Horse, Bovine
Host	Rabbit
Clonality	Polyclonal
Calculated MW	84 kDa

Additional Information

Alias Symbol	KIAA0343, MGC138845, MGC138846
Format	Liquid. Purified antibody supplied in 1x PBS buffer with 0.09% (w/v) sodium azide and 2% sucrose.
Reconstitution & Storage	Add 50 ul of distilled water. Final anti-NRCAM antibody concentration is 1 mg/ml in PBS buffer with 2% sucrose. For longer periods of storage, store at 20°C. Avoid repeat freeze-thaw cycles.
Precautions	NRCAM antibody - N-terminal region is for research use only and not for use in diagnostic or therapeutic procedures.

Protein Information

Images



WB Suggested Anti-NRCAM Antibody Titration: 0.2-1
µg/ml
Positive Control: Jurkat cell lysate