

SIL1 antibody - N-terminal region

Rabbit Polyclonal Antibody

Catalog # AI12507

Product Information

Application	WB, IHC
Primary Accession	Q9H173
Other Accession	NM_022464 , NP_071909
Reactivity	Human, Mouse, Rat, Rabbit, Pig, Dog, Guinea Pig, Horse, Bovine
Predicted	Human, Mouse, Rat, Rabbit, Pig, Chicken, Dog, Guinea Pig, Horse, Bovine
Host	Rabbit
Clonality	Polyclonal
Calculated MW	52085

Additional Information

Gene ID	64374
Alias Symbol	BAP, MSS, ULG5
Other Names	Nucleotide exchange factor SIL1, BiP-associated protein, BAP, SIL1
Format	Liquid. Purified antibody supplied in 1x PBS buffer with 0.09% (w/v) sodium azide and 2% sucrose.
Reconstitution & Storage	Add 50 ul of distilled water. Final anti-SIL1 antibody concentration is 1 mg/ml in PBS buffer with 2% sucrose. For longer periods of storage, store at 20°C. Avoid repeat freeze-thaw cycles.
Precautions	SIL1 antibody - N-terminal region is for research use only and not for use in diagnostic or therapeutic procedures.

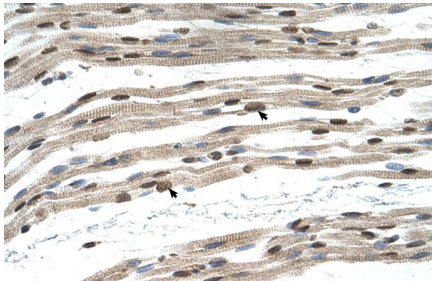
Protein Information

Name	SIL1
Function	Required for protein translocation and folding in the endoplasmic reticulum (ER). Functions as a nucleotide exchange factor for the ER luminal chaperone HSPA5.
Cellular Location	Endoplasmic reticulum lumen
Tissue Location	Highly expressed in tissues which produce large amounts of secreted proteins such as kidney, liver and placenta. Also expressed in colon, heart, lung, ovary, pancreas, peripheral leukocyte, prostate, spleen and thymus. Expressed at low levels throughout the brain.

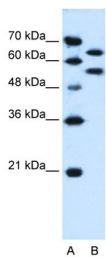
References

Anttonen,A.K.,(2005)Nat.Genet.37(12),1309-1311ReconstitutionandStorage:Forshorttermuse,storeat2-8Cupto 1week.Forlongtermstorage,storeat-20Cinsmallaliquotstopreventfreeze-thawcycles.

Images



Human Muscle



WB Suggested Anti-SIL1 Antibody Titration: 0.25µg/ml
Positive Control: HepG2 cell lysate

Please note: All products are 'FOR RESEARCH USE ONLY. NOT FOR USE IN DIAGNOSTIC OR THERAPEUTIC PROCEDURES'.