

CEACAM16 antibody - middle region

Rabbit Polyclonal Antibody

Catalog # AI12510

Product Information

Application	WB
Primary Accession	Q2WEN9
Other Accession	NM_001039213 , NP_001034302
Reactivity	Human, Mouse, Rat, Rabbit, Dog, Guinea Pig, Horse, Bovine
Predicted	Human, Mouse, Rat, Rabbit, Pig, Dog, Guinea Pig, Bovine
Host	Rabbit
Clonality	Polyclonal
Calculated MW	45873

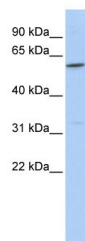
Additional Information

Gene ID	388551
Alias Symbol	CEAL2
Other Names	Carcinoembryonic antigen-related cell adhesion molecule 16, Carcinoembryonic antigen-like 2, CEACAM16, CEAL2
Format	Liquid. Purified antibody supplied in 1x PBS buffer with 0.09% (w/v) sodium azide and 2% sucrose.
Reconstitution & Storage	Add 50 ul of distilled water. Final anti-CEACAM16 antibody concentration is 1 mg/ml in PBS buffer with 2% sucrose. For longer periods of storage, store at 20°C. Avoid repeat freeze-thaw cycles.
Precautions	CEACAM16 antibody - middle region is for research use only and not for use in diagnostic or therapeutic procedures.

Protein Information

Name	CEACAM16 (HGNC:31948)
Function	Required for proper hearing, plays a role in maintaining the integrity of the tectorial membrane.
Cellular Location	Secreted. Note=Localizes to the tip of cochlear outer hair cells and to the tectorial membrane. {ECO:0000250 UniProtKB:E9QA28}

Images



WB Suggested Anti-CEACAM16 Antibody Titration: 0.2-1
µg/ml
ELISA Titer: 1:312500
Positive Control: Human brain

Please note: All products are 'FOR RESEARCH USE ONLY. NOT FOR USE IN DIAGNOSTIC OR THERAPEUTIC PROCEDURES'.