

# CEACAM16 antibody - middle region

Rabbit Polyclonal Antibody

Catalog # AI12511

## Product Information

---

<b>Application</b>	WB
<b>Primary Accession</b>	<a href="#">Q2WEN9</a>
<b>Other Accession</b>	<a href="#">NM_001039213</a> , <a href="#">NP_001034302</a>
<b>Reactivity</b>	Human, Mouse, Rat, Rabbit, Dog, Guinea Pig, Horse, Bovine
<b>Predicted</b>	Human, Mouse, Rat, Rabbit, Pig, Dog, Guinea Pig, Horse, Bovine
<b>Host</b>	Rabbit
<b>Clonality</b>	Polyclonal
<b>Calculated MW</b>	45873

## Additional Information

---

<b>Gene ID</b>	388551
<b>Alias Symbol</b>	CEAL2
<b>Other Names</b>	Carcinoembryonic antigen-related cell adhesion molecule 16, Carcinoembryonic antigen-like 2, CEACAM16, CEAL2
<b>Format</b>	Liquid. Purified antibody supplied in 1x PBS buffer with 0.09% (w/v) sodium azide and 2% sucrose.
<b>Reconstitution &amp; Storage</b>	Add 50 ul of distilled water. Final anti-CEACAM16 antibody concentration is 1 mg/ml in PBS buffer with 2% sucrose. For longer periods of storage, store at 20°C. Avoid repeat freeze-thaw cycles.
<b>Precautions</b>	CEACAM16 antibody - middle region is for research use only and not for use in diagnostic or therapeutic procedures.

## Protein Information

---

<b>Name</b>	CEACAM16 ( <a href="#">HGNC:31948</a> )
<b>Function</b>	Required for proper hearing, plays a role in maintaining the integrity of the tectorial membrane.
<b>Cellular Location</b>	Secreted. Note=Localizes to the tip of cochlear outer hair cells and to the tectorial membrane. {ECO:0000250 UniProtKB:E9QA28}

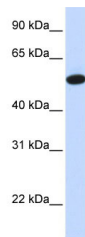
## References

---

Zebhauser, R., (2005) Genomics 86(5), 566-580 Reconstitution and Storage: For short term use, store at 2-8°C up to 1 week. For long term storage, store at -20°C in small aliquots to prevent freeze-thaw cycles.

## Images

---



WB Suggested Anti-CEACAM16 Antibody Titration: 0.2-1  
µg/ml  
ELISA Titer: 1:312500  
Positive Control: Human Liver

Please note: All products are 'FOR RESEARCH USE ONLY. NOT FOR USE IN DIAGNOSTIC OR THERAPEUTIC PROCEDURES'.