

DPP6 antibody - middle region

Rabbit Polyclonal Antibody

Catalog # AI12512

Product Information

Application	WB
Primary Accession	P42658
Other Accession	NM_001039350 , NP_001034439
Reactivity	Human, Mouse, Rat, Rabbit, Zebrafish, Dog, Guinea Pig, Horse, Bovine
Predicted	Human, Mouse, Rat, Rabbit, Pig, Chicken, Dog, Guinea Pig, Horse, Bovine
Host	Rabbit
Clonality	Polyclonal
Calculated MW	97588

Additional Information

Gene ID	1804
Alias Symbol	DPPX, MGC46605, VF2
Other Names	Dipeptidyl aminopeptidase-like protein 6, DPPX, Dipeptidyl aminopeptidase-related protein, Dipeptidyl peptidase 6, Dipeptidyl peptidase IV-like protein, Dipeptidyl peptidase VI, DPP VI, DPP6
Format	Liquid. Purified antibody supplied in 1x PBS buffer with 0.09% (w/v) sodium azide and 2% sucrose.
Reconstitution & Storage	Add 50 ul of distilled water. Final anti-DPP6 antibody concentration is 1 mg/ml in PBS buffer with 2% sucrose. For longer periods of storage, store at 20°C. Avoid repeat freeze-thaw cycles.
Precautions	DPP6 antibody - middle region is for research use only and not for use in diagnostic or therapeutic procedures.

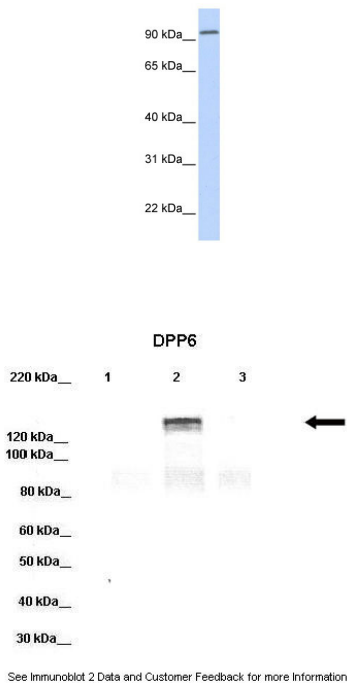
Protein Information

Name	DPP6 (HGNC:3010)
Function	Promotes cell surface expression of the potassium channel KCND2 (PubMed: 15454437 , PubMed: 19441798). Modulates the activity and gating characteristics of the potassium channel KCND2 (PubMed: 18364354). Has no dipeptidyl aminopeptidase activity (PubMed: 15476821 , PubMed: 8103397).
Cellular Location	Cell membrane; Single-pass type II membrane protein
Tissue Location	Expressed predominantly in brain.

References

Uhl,G.R.,(2008)Arch.Gen.Psychiatry65(6),683-693ReconstitutionandStorage:Forshorttermuse,storeat2-8Cupto 1week.Forlongtermstorage,storeat-20Cinsmallaliquotstopreventfreeze-thawcycles.

Images



WB Suggested Anti-DPP6 Antibody Titration: 0.2-1 µg/ml
ELISA Titer: 1:312500
Positive Control: Human brain

Lanes: Lane 1: 20ug HEK-293 cell lysate
Lane 2: 20ug hDPP6-YFP transfected HEK-293 lysate
Lane 3: 20ug hDPP10-YFP transfected HEK-293 lysate
Primary Antibody Dilution: 1:1000
Secondary Antibody: Donkey anti-rabbit-HRP
Secondary Antibody Dilution: 1:10,000
Gene Name: DPP6 a
Submitted by: Jeanne M. Nerbonne, Arvin Soepriatna,
Washington University Medical School Department of
Developmental Biology

Please note: All products are 'FOR RESEARCH USE ONLY. NOT FOR USE IN DIAGNOSTIC OR THERAPEUTIC PROCEDURES'.