

CHIC1 antibody - N-terminal region

Rabbit Polyclonal Antibody

Catalog # AI12519

Product Information

Application	WB
Primary Accession	Q5JSZ4
Other Accession	NM_001039840 , NP_001034929
Reactivity	Human, Mouse, Rat, Rabbit, Zebrafish, Pig, Dog, Guinea Pig, Horse, Bovine
Predicted	Human, Mouse, Rat, Rabbit, Zebrafish, Pig, Chicken, Guinea Pig, Bovine
Host	Rabbit
Clonality	Polyclonal
Calculated MW	24 KDa

Additional Information

Alias Symbol	RP11-108A15.1, BRX, DKFZp313P1931, DKFZp686F2342
Format	Liquid. Purified antibody supplied in 1x PBS buffer with 0.09% (w/v) sodium azide and 2% sucrose.
Reconstitution & Storage	Add 100 ul of distilled water. Final anti-CHIC1 antibody concentration is 1 mg/ml in PBS buffer with 2% sucrose. For longer periods of storage, store at 20°C. Avoid repeat freeze-thaw cycles.
Precautions	CHIC1 antibody - N-terminal region is for research use only and not for use in diagnostic or therapeutic procedures.

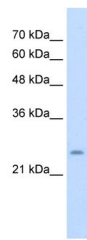
Protein Information

References

Cools, J., (2001) FEBS Lett. 492(3), 204-209 Reconstitution and Storage: For short term use, store at 2-8°C up to 1 week. For long term storage, store at -20°C in small aliquots to prevent freeze-thaw cycles.

Images

WB Suggested Anti-CHIC1 Antibody Titration: 5.0 µg/ml
Positive Control: Jurkat cell lysate



Please note: All products are 'FOR RESEARCH USE ONLY. NOT FOR USE IN DIAGNOSTIC OR THERAPEUTIC PROCEDURES'.