

Fkrp antibody - C-terminal region

Rabbit Polyclonal Antibody

Catalog # AI12520

Product Information

Application	WB
Primary Accession	Q8CG64
Other Accession	NM_173430 , NP_775606
Reactivity	Human, Mouse, Rat, Rabbit, Zebrafish, Pig, Dog, Guinea Pig, Bovine
Predicted	Human, Mouse, Rat, Rabbit, Zebrafish, Pig, Bovine
Host	Rabbit
Clonality	Polyclonal
Calculated MW	54852

Additional Information

Gene ID	243853
Alias Symbol	A830029B19Rik, AI842067, AI847300, LGMD1I, MDC1C
Other Names	Fukutin-related protein, 2.-.-., Fkrp
Format	Liquid. Purified antibody supplied in 1x PBS buffer with 0.09% (w/v) sodium azide and 2% sucrose.
Reconstitution & Storage	Add 50 ul of distilled water. Final anti-Fkrp antibody concentration is 1 mg/ml in PBS buffer with 2% sucrose. For longer periods of storage, store at 20°C. Avoid repeat freeze-thaw cycles.
Precautions	Fkrp antibody - C-terminal region is for research use only and not for use in diagnostic or therapeutic procedures.

Protein Information

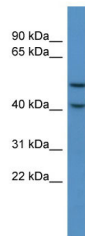
Name	Fkrp {ECO:0000312 MGI:MGI:2447586}
Function	Catalyzes the transfer of CDP-ribitol to ribitol 5-phosphate previously attached by FKTN/fukutin of to the phosphorylated O-mannosyl trisaccharide (N-acetylgalactosamine-beta-3-N-acetylglucosamine-beta-4-(phosphate-6-)mannose), a carbohydrate structure present in alpha-dystroglycan (DAG1) (PubMed: 26923585). This constitutes the second step in the formation of the ribose 5-phosphate tandem repeat which links the phosphorylated O-mannosyl trisaccharide to the ligand binding moiety composed of repeats of 3-xylosyl-alpha-1,3-glucuronic acid-beta- 1 (PubMed: 26923585).
Cellular Location	Golgi apparatus membrane; Single-pass type II membrane protein. Secreted.

Cell membrane, sarcolemma. Rough endoplasmic reticulum {ECO:0000250|UniProtKB:Q9H9S5}. Cytoplasm. Note=The N-terminal hydrophobic domain is cleaved after translocation to the Golgi apparatus and the protein is secreted (PubMed:19900540). Localization at the cell membrane may require the presence of dystroglycan (PubMed:17452335). At the Golgi apparatus localizes to the middle-to-trans-cisternae (PubMed:12471058, PubMed:17554798). Detected in rough endoplasmic reticulum in myocytes (By similarity). {ECO:0000250|UniProtKB:Q9H9S5, ECO:0000269|PubMed:12471058, ECO:0000269|PubMed:17452335, ECO:0000269|PubMed:17554798, ECO:0000269|PubMed:19900540}

Tissue Location

Expressed in the retina, specifically in the inner segments of the photoreceptors, the outer plexiform layers, inner nuclear layers, and ganglion cell layers (at protein level) (PubMed:29416295). Expressed at highest levels in brain, lung, heart, kidney and liver (PubMed:12471058).

Images



WB Suggested Anti-Fkrp Antibody Titration: 0.2-1 µg/ml
ELISA Titer: 1:62500
Positive Control: Mouse Heart

Please note: All products are 'FOR RESEARCH USE ONLY. NOT FOR USE IN DIAGNOSTIC OR THERAPEUTIC PROCEDURES'.