

# ALS2CR4 antibody - middle region

Rabbit Polyclonal Antibody

Catalog # AI12529

## Product Information

---

|                          |   |
|--------------------------|---|
| <b>Application</b>       | WB  |
| <b>Primary Accession</b> | <a href="#">Q96Q45</a>                                      |
| <b>Other Accession</b>   | <a href="#">NM_001044385</a> , <a href="#">NP_001037850</a> |
| <b>Reactivity</b>        | Human, Mouse, Rat, Rabbit, Pig, Dog, Horse, Bovine          |
| <b>Predicted</b>         | Human, Mouse, Rat, Rabbit, Pig, Dog, Horse, Bovine          |
| <b>Host</b>              | Rabbit  |
| <b>Clonality</b>         | Polyclonal  |
| <b>Calculated MW</b>     | 45526   |

## Additional Information

---

|                                     |  |
|-------------------------------------|--|
| <b>Gene ID</b>                      | 65062  |
| <b>Alias Symbol</b>                 | DKFZp313L091, FLJ33282, JBTS14, ALS2CR4  |
| <b>Other Names</b>                  | Transmembrane protein 237, Amyotrophic lateral sclerosis 2 chromosomal region candidate gene 4 protein, TMEM237, ALS2CR4   |
| <b>Format</b>                       | Liquid. Purified antibody supplied in 1x PBS buffer with 0.09% (w/v) sodium azide and 2% sucrose.  |
| <b>Reconstitution &amp; Storage</b> | Add 50 ul of distilled water. Final anti-ALS2CR4 antibody concentration is 1 mg/ml in PBS buffer with 2% sucrose. For longer periods of storage, store at 20°C. Avoid repeat freeze-thaw cycles. |
| <b>Precautions</b>                  | ALS2CR4 antibody - middle region is for research use only and not for use in diagnostic or therapeutic procedures.   |

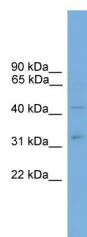
## Protein Information

---

|                          |   |
|--------------------------|---|
| <b>Name</b>              | TMEM237   |
| <b>Synonyms</b>          | ALS2CR4   |
| <b>Function</b>          | Component of the transition zone in primary cilia. Required for ciliogenesis.   |
| <b>Cellular Location</b> | Membrane; Multi-pass membrane protein. Cell projection, cilium.<br>Note=Localizes at the proximal region of primary cilia were observed, consistent with localization to the transition zone. Anchored to the transition zone by RPGRIP1L |

## Images

---



WB Suggested Anti-ALS2CR4 Antibody Titration: 0.2-1  
µg/ml  
Positive Control: HT1080 cell lysate

Please note: All products are 'FOR RESEARCH USE ONLY. NOT FOR USE IN DIAGNOSTIC OR THERAPEUTIC PROCEDURES'.