

# Creld1 Antibody - middle region

Rabbit Polyclonal Antibody

Catalog # AI12532

## Product Information

---

<b>Application</b>	WB
<b>Primary Accession</b>	<a href="#">Q91XD7</a>
<b>Other Accession</b>	<a href="#">NM_133930</a> , <a href="#">NP_598691</a>
<b>Reactivity</b>	Human, Mouse, Rat, Pig, Dog, Guinea Pig, Horse, Bovine
<b>Predicted</b>	Human, Mouse, Rat, Pig, Dog, Guinea Pig, Horse, Bovine
<b>Host</b>	Rabbit
<b>Clonality</b>	Polyclonal
<b>Calculated MW</b>	45718

## Additional Information

---

<b>Gene ID</b>	171508
<b>Alias Symbol</b>	AI843811
<b>Other Names</b>	Cysteine-rich with EGF-like domain protein 1, Creld1
<b>Format</b>	Liquid. Purified antibody supplied in 1x PBS buffer with 0.09% (w/v) sodium azide and 2% sucrose.
<b>Reconstitution &amp; Storage</b>	Add 50 ul of distilled water. Final anti-Creld1 antibody concentration is 1 mg/ml in PBS buffer with 2% sucrose. For longer periods of storage, store at 20°C. Avoid repeat freeze-thaw cycles.
<b>Precautions</b>	Creld1 Antibody - middle region is for research use only and not for use in diagnostic or therapeutic procedures.

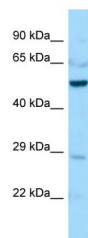
## Protein Information

---

<b>Name</b>	Creld1
<b>Function</b>	Protein disulfide isomerase (By similarity). Promotes the localization of acetylcholine receptors (AChRs) to the plasma membrane (PubMed: <a href="#">30407909</a> ).
<b>Cellular Location</b>	Membrane; Multi-pass membrane protein
<b>Tissue Location</b>	Expressed in myoblast C2C12 cells (at protein level).

## Images

---



Host: Rabbit

Target Name: Creld1

Sample Tissue: Mouse Lung lysates

Antibody Dilution: 1.0µg/ml

Please note: All products are 'FOR RESEARCH USE ONLY. NOT FOR USE IN DIAGNOSTIC OR THERAPEUTIC PROCEDURES'.