

# FLJ22167 antibody - N-terminal region

Rabbit Polyclonal Antibody

Catalog # AI12534

## Product Information

---

<b>Application</b>	WB, IHC
<b>Primary Accession</b>	<a href="#">Q9H6L2</a>
<b>Other Accession</b>	<a href="#">NM_001077418</a> , <a href="#">NP_001070886</a>
<b>Reactivity</b>	Human, Mouse, Rat, Rabbit, Zebrafish, Pig, Dog, Guinea Pig, Horse, Bovine
<b>Predicted</b>	Human, Mouse, Rat, Zebrafish, Bovine
<b>Host</b>	Rabbit
<b>Clonality</b>	Polyclonal
<b>Calculated MW</b>	36059

## Additional Information

---

<b>Gene ID</b>	79583
<b>Alias Symbol</b>	ALYE870, PRO1886, FLJ22167
<b>Other Names</b>	Transmembrane protein 231, TMEM231
<b>Format</b>	Liquid. Purified antibody supplied in 1x PBS buffer with 0.09% (w/v) sodium azide and 2% sucrose.
<b>Reconstitution &amp; Storage</b>	Add 100 ul of distilled water. Final anti-FLJ22167 antibody concentration is 1 mg/ml in PBS buffer with 2% sucrose. For longer periods of storage, store at 20°C. Avoid repeat freeze-thaw cycles.
<b>Precautions</b>	FLJ22167 antibody - N-terminal region is for research use only and not for use in diagnostic or therapeutic procedures.

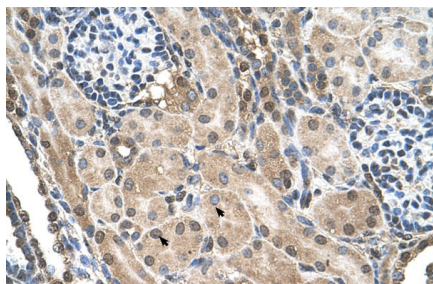
## Protein Information

---

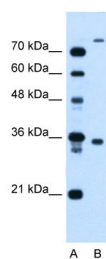
<b>Name</b>	TMEM231
<b>Function</b>	Transmembrane component of the tectonic-like complex, a complex localized at the transition zone of primary cilia and acting as a barrier that prevents diffusion of transmembrane proteins between the cilia and plasma membranes. Required for ciliogenesis and sonic hedgehog/SHH signaling (By similarity).
<b>Cellular Location</b>	Cell projection, cilium membrane; Multi-pass membrane protein. Note=Localizes to the transition zone of primary cilia; SEPT2 is required for localization to the transition zone.

## Images

---



Human kidney



WB Suggested Anti-FLJ22167 Antibody Titration:  
1.25µg/ml  
Positive Control: HepG2 cell lysate

Please note: All products are 'FOR RESEARCH USE ONLY. NOT FOR USE IN DIAGNOSTIC OR THERAPEUTIC PROCEDURES'.