

# SDK1 antibody - middle region

Rabbit Polyclonal Antibody

Catalog # AI12537

## Product Information

Application	WB
Primary Accession	<a href="#">Q7Z5N4</a>
Other Accession	<a href="#">NM_001079653</a> , <a href="#">NP_001073121</a>
Reactivity	Human, Rabbit, Zebrafish, Dog, Guinea Pig, Horse, Bovine
Predicted	Human, Rabbit, Dog, Guinea Pig, Horse, Bovine
Host	Rabbit
Clonality	Polyclonal
Calculated MW	242112

## Additional Information

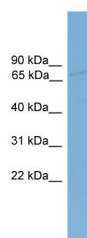
Gene ID	221935
Alias Symbol	FLJ31425
Other Names	Protein sidekick-1, SDK1
Format	Liquid. Purified antibody supplied in 1x PBS buffer with 0.09% (w/v) sodium azide and 2% sucrose.
Reconstitution & Storage	Add 50 ul of distilled water. Final anti-SDK1 antibody concentration is 1 mg/ml in PBS buffer with 2% sucrose. For longer periods of storage, store at 20°C. Avoid repeat freeze-thaw cycles.
Precautions	SDK1 antibody - middle region is for research use only and not for use in diagnostic or therapeutic procedures.

## Protein Information

Name	SDK1 {ECO:0000303 PubMed:15213259, ECO:0000312 HGNC:HGNC:19307}
Function	Adhesion molecule that promotes lamina-specific synaptic connections in the retina. Expressed in specific subsets of interneurons and retinal ganglion cells (RGCs) and promotes synaptic connectivity via homophilic interactions.
Cellular Location	Cell membrane {ECO:0000250 UniProtKB:Q8AV58}; Single-pass type I membrane protein {ECO:0000250 UniProtKB:Q8AV58} Synapse {ECO:0000250 UniProtKB:Q8AV58}
Tissue Location	Up-regulated in glomeruli in HIV-associated nephropathy. In diseased glomeruli, significantly overexpressed and the expression is no longer restricted to mesangial cells but includes podocytes and parietal epithelial

## Images

---



WB Suggested Anti-SDK1 Antibody Titration: 0.2-1  $\mu\text{g/ml}$   
Positive Control: OVCAR-3 cell lysate

Please note: All products are 'FOR RESEARCH USE ONLY. NOT FOR USE IN DIAGNOSTIC OR THERAPEUTIC PROCEDURES'.