

ACVR2B antibody - C-terminal region

Rabbit Polyclonal Antibody

Catalog # AI12539

Product Information

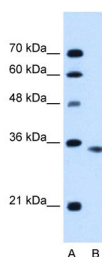
Application	WB
Primary Accession	Q4VAU9
Other Accession	NM_001106 , AAH96245
Reactivity	Human, Mouse, Rat, Rabbit, Zebrafish, Dog, Guinea Pig, Horse, Bovine, Sheep
Predicted	Human, Rat, Zebrafish, Pig, Chicken, Dog, Horse, Sheep
Host	Rabbit
Clonality	Polyclonal
Calculated MW	33 kDa

Additional Information

Alias Symbol	HTX4, ACTRIIB, ActR-IIB
Format	Liquid. Purified antibody supplied in 1x PBS buffer with 0.09% (w/v) sodium azide and 2% sucrose.
Reconstitution & Storage	Add 50 ul of distilled water. Final anti-ACVR2B antibody concentration is 1 mg/ml in PBS buffer with 2% sucrose. For longer periods of storage, store at 20°C. Avoid repeat freeze-thaw cycles.
Precautions	ACVR2B antibody - C-terminal region is for research use only and not for use in diagnostic or therapeutic procedures.

Protein Information

Images



WB Suggested Anti-ACVR2B Antibody Titration: 0.2-1
µg/ml
Positive Control: HepG2 cell lysate