

# ACP2 antibody - middle region

Rabbit Polyclonal Antibody

Catalog # AI12545

## Product Information

<b>Application</b>	WB, IHC
<b>Primary Accession</b>	<a href="#">P11117</a>
<b>Other Accession</b>	<a href="#">NM_001610</a> , <a href="#">NP_001601</a>
<b>Reactivity</b>	Human, Mouse, Rat, Rabbit, Pig, Dog, Guinea Pig, Horse, Bovine
<b>Predicted</b>	Human, Mouse, Rat, Rabbit, Pig, Dog, Guinea Pig, Horse
<b>Host</b>	Rabbit
<b>Clonality</b>	Polyclonal
<b>Calculated MW</b>	48344

## Additional Information

<b>Gene ID</b>	53
<b>Other Names</b>	Lysosomal acid phosphatase, LAP, 3.1.3.2, ACP2
<b>Format</b>	Liquid. Purified antibody supplied in 1x PBS buffer with 0.09% (w/v) sodium azide and 2% sucrose.
<b>Reconstitution &amp; Storage</b>	Add 50 ul of distilled water. Final anti-ACP2 antibody concentration is 1 mg/ml in PBS buffer with 2% sucrose. For longer periods of storage, store at 20°C. Avoid repeat freeze-thaw cycles.
<b>Precautions</b>	ACP2 antibody - middle region is for research use only and not for use in diagnostic or therapeutic procedures.

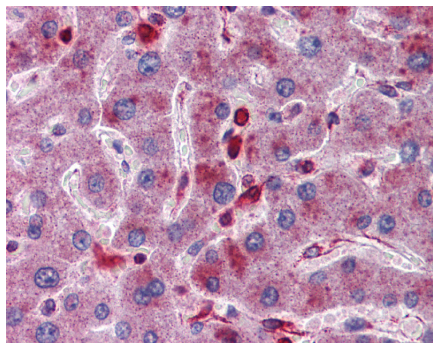
## Protein Information

<b>Name</b>	ACP2
<b>Cellular Location</b>	Lysosome membrane; Single-pass membrane protein; Luminal side. Lysosome lumen. Note=The soluble form arises by proteolytic processing of the membrane-bound form

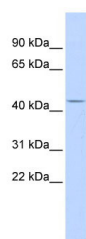
## References

Melquist, S., (2007) Am. J. Hum. Genet. 80(4), 769-778  
Reconstitution and Storage: For short term use, store at 2-8°C up to 1 week. For long term storage, store at -20°C in small aliquots to prevent freeze-thaw cycles.

## Images



Liver



WB Suggested Anti-ACP2 Antibody Titration: 0.2-1  $\mu\text{g/ml}$   
ELISA Titer: 1:62500  
Positive Control: Human brain

Please note: All products are 'FOR RESEARCH USE ONLY. NOT FOR USE IN DIAGNOSTIC OR THERAPEUTIC PROCEDURES'.