

Atp1b2 antibody - N-terminal region

Rabbit Polyclonal Antibody

Catalog # AI12546

Product Information

Application	WB
Primary Accession	P14231
Other Accession	NM_013415 , NP_038201
Reactivity	Human, Mouse, Rat, Rabbit, Zebrafish, Pig, Dog, Guinea Pig, Horse, Bovine
Predicted	Human, Mouse, Rat, Dog, Guinea Pig, Horse, Bovine
Host	Rabbit
Clonality	Polyclonal
Calculated MW	33344

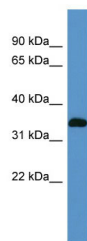
Additional Information

Gene ID	11932
Alias Symbol Other Names	Amog, Atpb-2 Sodium/potassium-transporting ATPase subunit beta-2, Adhesion molecule in glia, AMOG, Sodium/potassium-dependent ATPase subunit beta-2, Atp1b2
Format	Liquid. Purified antibody supplied in 1x PBS buffer with 0.09% (w/v) sodium azide and 2% sucrose.
Reconstitution & Storage	Add 50 ul of distilled water. Final anti-Atp1b2 antibody concentration is 1 mg/ml in PBS buffer with 2% sucrose. For longer periods of storage, store at 20°C. Avoid repeat freeze-thaw cycles.
Precautions	Atp1b2 antibody - N-terminal region is for research use only and not for use in diagnostic or therapeutic procedures.

Protein Information

Name	Atp1b2
Function	This is the non-catalytic component of the active enzyme, which catalyzes the hydrolysis of ATP coupled with the exchange of Na(+) and K(+) ions across the plasma membrane. The exact function of the beta-2 subunit is not known.
Cellular Location	Cell membrane; Single-pass type II membrane protein

Images



WB Suggested Anti-Atp1b2 Antibody Titration: 0.2-1 µg/ml
ELISA Titer: 1:62500
Positive Control: Mouse Kidney

Please note: All products are 'FOR RESEARCH USE ONLY. NOT FOR USE IN DIAGNOSTIC OR THERAPEUTIC PROCEDURES'.