

Dct antibody - N-terminal region

Rabbit Polyclonal Antibody

Catalog # AI12550

Product Information

Application	WB
Primary Accession	P29812
Other Accession	NM_010024 , NP_034154
Reactivity	Human, Mouse, Rat, Rabbit, Pig, Dog, Guinea Pig, Horse, Bovine, Sheep
Predicted	Human, Mouse, Rat, Rabbit, Pig, Chicken, Guinea Pig, Horse, Sheep
Host	Rabbit
Clonality	Polyclonal
Calculated MW	58510

Additional Information

Gene ID	13190
Alias Symbol	DT, TRP-2, TRP2, Tyrp-2, Tyrp2, slaty, slt
Other Names	L-dopachrome tautomerase, DCT, DT, 5.3.3.12, L-dopachrome Delta-isomerase, SLATY locus protein, Tyrosinase-related protein 2, TRP-2, TRP2, Dct, Tyrp-2, Tyrp2
Format	Liquid. Purified antibody supplied in 1x PBS buffer with 0.09% (w/v) sodium azide and 2% sucrose.
Reconstitution & Storage	Add 50 ul of distilled water. Final anti-Dct antibody concentration is 1 mg/ml in PBS buffer with 2% sucrose. For longer periods of storage, store at 20°C. Avoid repeat freeze-thaw cycles.
Precautions	Dct antibody - N-terminal region is for research use only and not for use in diagnostic or therapeutic procedures.

Protein Information

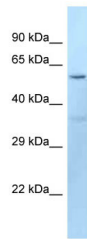
Name	Dct {ECO:0000312 MGI:MGI:102563}
Synonyms	Tyrp-2, Tyrp2
Function	Plays a role in melanin biosynthesis (PubMed: 33100333). Catalyzes the conversion of L-dopachrome into 5,6-dihydroxyindole-2- carboxylic acid (DHICA) (PubMed: 1537333 , PubMed: 1537334).
Cellular Location	Melanosome membrane {ECO:0000250 UniProtKB:P40126}; Single-pass type I membrane protein {ECO:0000250 UniProtKB:P40126}. Melanosome. Note=Proper trafficking to melanosome is regulated by SGSM2, ANKRD27,

RAB9A, RAB32 and RAB38

Tissue Location

Melanocytes and retinal pigmented epithelium (at protein level).

Images



WB Suggested Anti-Dct Antibody Titration: 1.0 µg/ml
Positive Control: Mouse Kidney

Please note: All products are 'FOR RESEARCH USE ONLY. NOT FOR USE IN DIAGNOSTIC OR THERAPEUTIC PROCEDURES'.