

Dct antibody - middle region

Rabbit Polyclonal Antibody

Catalog # AI12551

Product Information

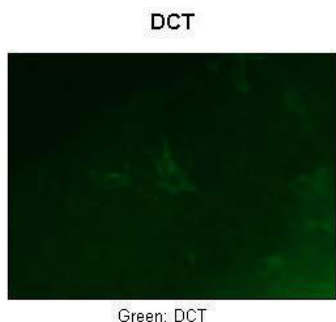
Application	WB, IHC
Primary Accession	Q6NXI2
Other Accession	NM_010024 , NP_034154
Reactivity	Human, Mouse, Rat, Rabbit, Zebrafish, Pig, Dog, Guinea Pig, Horse, Bovine, Sheep
Predicted Host	Human, Mouse, Rat, Rabbit, Zebrafish, Pig, Guinea Pig, Horse, Sheep
Clonality	Rabbit
Calculated MW	Polyclonal 56 KDa

Additional Information

Alias Symbol	DT, TRP-2, TRP2, Tyrp-2, Tyrp2, slaty, slt
Format	Liquid. Purified antibody supplied in 1x PBS buffer with 0.09% (w/v) sodium azide and 2% sucrose.
Reconstitution & Storage	Add 50 ul of distilled water. Final anti-Dct antibody concentration is 1 mg/ml in PBS buffer with 2% sucrose. For longer periods of storage, store at 20°C. Avoid repeat freeze-thaw cycles.
Precautions	Dct antibody - middle region is for research use only and not for use in diagnostic or therapeutic procedures.

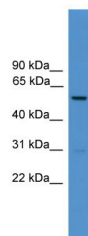
Protein Information

Images



Sample Type : Zebrafish embryo section
Primary Antibody Dilution : 1:50
Secondary Antibody : Anti-rabbit-Alexa Fluor 488
Secondary Antibody Dilution : 1:500 Color/Signal
Descriptions : Green: DCT
Gene Name : Dct Submitted by : Anonymous

See IHC 1 Data and Customer Feedback for more Information



WB Suggested Anti-Dct Antibody Titration: 0.2-1 $\mu\text{g/ml}$
ELISA Titer: 1:1562500
Positive Control: Mouse Heart

Please note: All products are 'FOR RESEARCH USE ONLY. NOT FOR USE IN DIAGNOSTIC OR THERAPEUTIC PROCEDURES'.